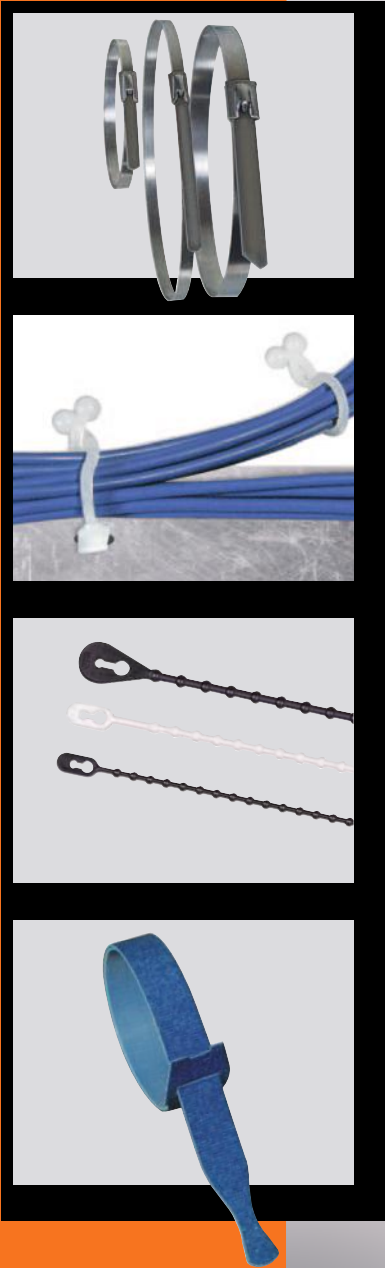




C13

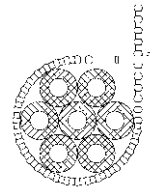
Various cable ties

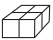





PLIO-GRAINS

| | | |
|--------------------------------|---------------------------------|--------------------|
| Material: | PA (polyamide 6) | PP (polypropylene) |
| Colours: | natural - black | natural |
| Operating temperatures: | -20 to +85°C | -20 to +75°C |
| Flame resistance: | V2 UL94 | - |
| Application: | outdoor use for black colour | standard use |



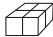
| type | article number | length mm | bundle Ø mm | tensile strength daN | colour |  |
|-----------------------|----------------|-----------|-------------|----------------------|---------|--|
| 110 PA natural | 0113 0001 018 | 110 | 2 - 30 | 9 | natural | 500 |
| 160 PA natural | 0113 0003 018 | 160 | 6 - 50 | 11 | natural | 500 |
| 260 PA natural | 0113 0002 018 | 260 | 10 - 75 | 25 | natural | 100 |
| 110 PA black | 0113 0001 010 | 110 | 2 - 30 | 9 | black | 500 |
| 160 PA black | 0113 0003 010 | 160 | 6 - 50 | 11 | black | 500 |
| 260 PA black | 0113 0002 010 | 260 | 10 - 75 | 25 | black | 100 |



| type | article number | length mm | bundle Ø mm | tensile strength daN | colour |  |
|-----------------------|----------------|-----------|-------------|----------------------|---------|---|
| 110 PP natural | 0113 0010 018 | 110 | 2 - 30 | 7 | natural | 500 |
| 160 PP natural | 0113 0012 018 | 160 | 6 - 50 | 9 | natural | 500 |
| 260 PP natural | 0113 0011 018 | 260 | 10 - 75 | 11 | natural | 100 |

• **Cable ties series CB**
for cable bundles - outside serration

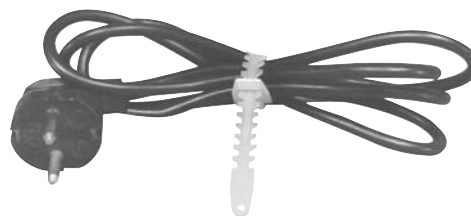
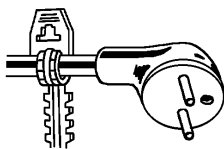
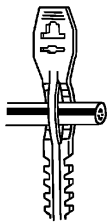


| type | artide number | dimensions length x width mm | maximum bundle Ø mm | tensile strength mini. (daN) |  |
|------------------|---------------|------------------------------------|---------------------------|------------------------------------|---|
| CB 140 F natural | 0141 0002 018 | 140 x 6 | 10 → 30 | 10 | 500 |
| CB 200 F natural | 0141 0004 018 | 200 x 6 | 12 → 50 | 10 | 500 |

• **Cable ties series SF**
for cable binding and plugtop retention.



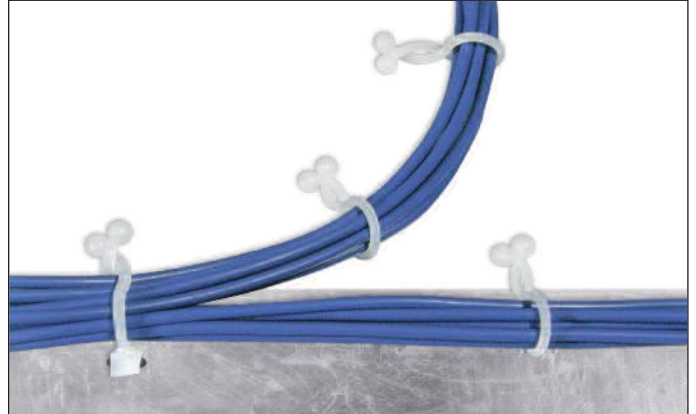
| type | artide number | dimensions length x width mm |  |
|-------------------------|---------------|------------------------------------|--|
| SES-160/90 SF-D natural | 0186 0950 018 | 165 x 9 | 500 |
| SES-160/90 SF-C natural | 0186 0955 018 | 165 x 9 | 100 |



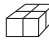
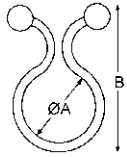

SES-TW

Material: polyamide 6.6
Colour: natural
Operating temperatures: -40 to +85°C
Ultimate elongation: 40 %
Flame resistance: V2 UL94
Dielectric strength: > 23 kV/mm

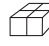
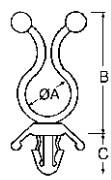

Application: twist cable ties for quick assembly for indoor use.



• Twist cable ties

| type | article number | dimensions (mm) | | |  |  |  |
|---------------|----------------|-----------------|------|-----------|---|--|--|
| | | ØA | B | binding Ø | | | |
| TW-4 natural | 0186 0943 018 | 5,2 | 21 | 4,5 | 100 | | |
| TW-10 natural | 0186 0941 018 | 8,6 | 26 | 7,6 | 100 | | |
| TW-12 natural | 0186 0940 018 | 12 | 30 | 11 | 100 | | |
| TW-14 natural | 0186 0945 018 | 15 | 35,1 | 14 | 100 | | |
| TW-20 natural | 0186 0942 018 | 20 | 39,5 | 18 | 100 | | |

• Twist cable tie with rivet

| type | article number | dimensions (mm) | | | |  |  |  |
|-----------------|----------------|-----------------|----|----|--------|---|---|---|
| | | ØA | B | C | bore Ø | | | |
| TW-R-10 natural | 0186 0946 018 | 11 | 31 | 10 | 4,8 | 100 | | |

SES-WRAP Ties

Plastic tie - self fastening



SES-WRAP

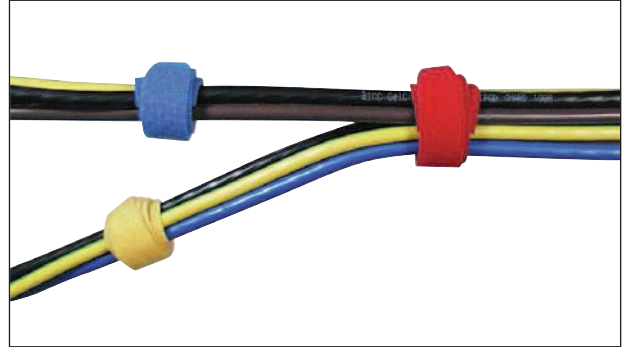


SES-WRAP

Material: hooks: polyethylene
strap: nylon PA

Operating temperatures: -20 to +105°C

Application: used for fixing of delicate cables, organization of cables...
Out of velour-laminate, SES-WRAP ties spare the cables and have the advantage of being adjustable and reusable.

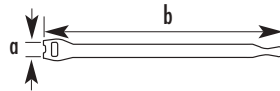


Standard colours:

| | | | | | |
|-------|------|-------|--------|-----|-------|
| 001 | 002 | 003 | 004 | 007 | 010 |
| white | blue | green | yellow | red | black |

Example for order:

| code group | detail article | code colour |
|------------|----------------|-------------|
| 0821 | XXXXXX | XXXX |



| type | article number | dimensions a x b mm | |
|-----------------|----------------|---------------------------|----|
| SES-WRAP 20x150 | 0821 0020 *** | 13 x 150 | 60 |
| SES-WRAP 20x200 | 0821 0021 *** | 13 x 200 | 50 |
| SES-WRAP 20x330 | 0821 0022 *** | 13 x 330 | 30 |




Bag available with a European suspension hole.

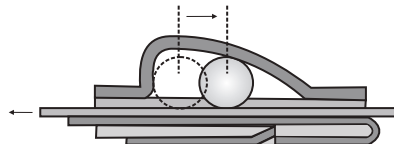
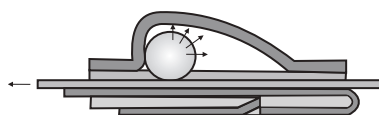
For black inkjet printing on SES-WRAP cable ties, please consult us.

INOX-BALL-QUICK

Material: stainless steel 304 or 316
Operating temperatures: -80 to +540°C
Thickness: 0,265 mm
Flame resistance: non-flammable
U.V. resistance: very good
Specification: certification UL 62275
Applications: for cables or flexible tubing.
304: recommended in extreme temperature applications or flammable like food, chemical, medical ...
316: recommended in applications with risk of corrosion, such as shipbuilding, mining, petrochemical, textile ...
 High resistance to **corrosion**.



| Stainless steel 304 | | Stainless steel 316 | | dimensions length x width mm | maximum bundle Ø mm | tensile strength mini (daN) |  |
|---------------------|----------------|---------------------|----------------|------------------------------------|---------------------------|-----------------------------------|---|
| type | article number | type | article number | | | | |
| IBQ 100/46 N304 | 0187 0007 000 | IBQ 100/46 N316 | 0187 0027 000 | 100 x 4,6 | 18 | 44 | 100 |
| IBQ 200/46 N304 | 0187 0001 000 | IBQ 200/46 N316 | 0187 0021 000 | 200 x 4,6 | 50 | 44 | 100 |
| IBQ 260/46 N304 | 0187 0002 000 | IBQ 260/46 N316 | 0187 0022 000 | 260 x 4,6 | 69 | 44 | 100 |
| IBQ 360/46 N304 | 0187 0003 000 | IBQ 360/46 N316 | 0187 0023 000 | 360 x 4,6 | 100 | 44 | 100 |
| IBQ 520/46 N304 | 0187 0004 000 | IBQ 520/46 N316 | 0187 0024 000 | 520 x 4,6 | 151 | 44 | 100 |
| IBQ 620/46 N304 | 0187 0005 000 | IBQ 620/46 N316 | 0187 0025 000 | 620 x 4,6 | 183 | 44 | 100 |
| IBQ 840/46 N304 | 0187 0006 000 | IBQ 840/46 N316 | 0187 0026 000 | 840 x 4,6 | 253 | 44 | 100 |
| IBQ 100/79 N304 | 0187 0018 000 | IBQ 100/79 N316 | 0187 0037 000 | 100 x 7,9 | 18 | 111 | 100 |
| IBQ 200/79 N304 | 0187 0011 000 | IBQ 200/79 N316 | 0187 0031 000 | 200 x 7,9 | 50 | 111 | 100 |
| IBQ 260/79 N304 | 0187 0012 000 | IBQ 260/79 N316 | 0187 0032 000 | 260 x 7,9 | 69 | 111 | 100 |
| IBQ 360/79 N304 | 0187 0013 000 | IBQ 360/79 N316 | 0187 0033 000 | 360 x 7,9 | 100 | 111 | 100 |
| IBQ 520/79 N304 | 0187 0014 000 | IBQ 520/79 N316 | 0187 0034 000 | 520 x 7,9 | 151 | 111 | 100 |
| IBQ 620/79 N304 | 0187 0015 000 | IBQ 620/79 N316 | 0187 0035 000 | 620 x 7,9 | 183 | 111 | 100 |
| IBQ 840/79 N304 | 0187 0016 000 | IBQ 840/79 N316 | 0187 0036 000 | 840 x 7,9 | 253 | 111 | 100 |
| IBQ 1000/79 N304 | 0187 0017 000 | - | - | 1000 x 7,9 | 304 | 111 | 100 |



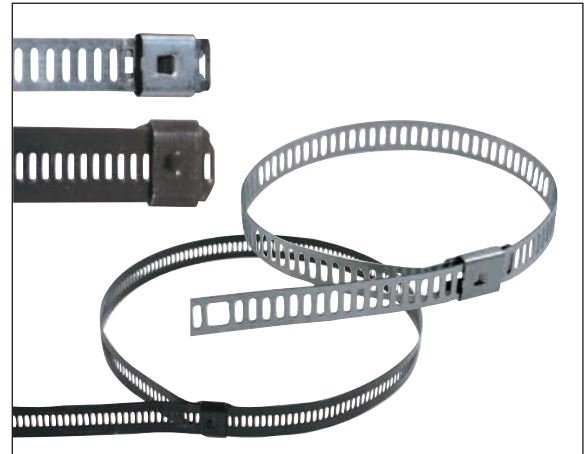
INOX-MULTI-QUICK

| | | |
|-----------------------------|------------------------------------|------------------------------------|
| Material: | IMQ N316 stainless steel | IMQ R316 stainless steel |
| Coating: | - | polyester |
| Temperatures of use: | -80 to +540°C | -30 to +150°C |
| Thickness: | 0,279 mm | 0,46 mm |
| Flame resistance: | non-flammable | - |
| U.V. resistance: | excellent | very good |

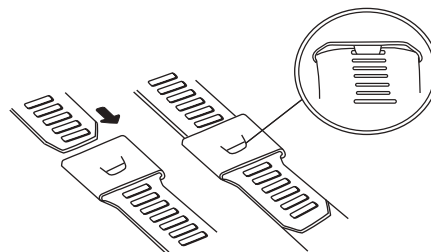
Applications: these ties can be tightened in steps due to a unique multiple locking system. To apply with a hook or with tensioner on rigid or flexible support.

316: recommended in extreme temperature applications and **corrosion**..





316 coated: recommended for fragile insulated cables.



| Stainless steel 316 | | Stainless steel 316 PA coated | | dimensions length x width mm | maximum bundle Ø mm | tensile strength mini (daN) | |
|---------------------|----------------|-------------------------------|----------------|------------------------------------|---------------------------|-----------------------------------|-----|
| type | article number | type | article number | | | | |
| IMQ 225/70 N316 | 0187 0101 000 | IMQ 225/70 R316 | 0187 0121 000 | 225 x 7 | 58 | 44 | 100 |
| IMQ 300/70 N316 | 0187 0102 000 | IMQ 300/70 R316 | 0187 0122 000 | 300 x 7 | 80 | 44 | 100 |
| IMQ 450/70 N316 | 0187 0103 000 | IMQ 450/70 R316 | 0187 0123 000 | 450 x 7 | 128 | 44 | 100 |
| IMQ 610/70 N316 | 0187 0104 000 | IMQ 610/70 R316 | 0187 0124 000 | 610 x 7 | 179 | 44 | 100 |
| IMQ 225/120 N316 | 0187 0111 000 | IMQ 225/120 R316 | 0187 0131 000 | 225 x 12 | 58 | 111 | 100 |
| IMQ 300/120 N316 | 0187 0112 000 | IMQ 300/120 R316 | 0187 0132 000 | 300 x 12 | 80 | 111 | 100 |
| IMQ 450/120 N316 | 0187 0113 000 | IMQ 450/120 R316 | 0187 0133 000 | 450 x 12 | 128 | 111 | 100 |
| IMQ 610/120 N316 | 0187 0114 000 | IMQ 610/120 R316 | 0187 0134 000 | 610 x 12 | 179 | 111 | 100 |





| type | article number | description | for ties | weight g |  | |
|---------------|----------------|---|--|----------|---|--|
| K502 | 0187 0200 000 | adjustable tension and automatic cut-off | INOX-BALL-QUICK | 450 | 1 |  |
| K111 | 0187 0240 000 | manual pulling and cutting | INOX-BALL-QUICK & INOX-MULTI-QUICK | 550 | 1 |  |
| RR-G01 | 0187 0250 000 | adjustable tension and automatic cut-off. | INOX-BALL-QUICK & INOX-MULTI-QUICK (width only 7 mm) | 550 | 1 |  |



PLIOTER earth straps

Strap: tinned bronze
Cap and wire-strainer: electrogalvanized steel
Section: 1,5 to 50 mm²
Specification: conform to norm NF C15-100
Application: designed for grounding electrical installations and metal conduits.
 The range covers a range of conductors from 1.5 to 50 mm² and tubes from 8 to 88 mm Ø.
 The flange and cable are fixed by screwing.

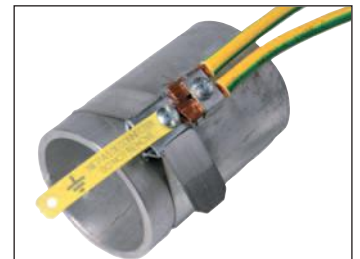


EQUIPOTENTIAL CONNECTIONS - CONNECTIONS TO EARTH - CONNECTIONS TO MASS (C.E.M.)

• Earth straps 1,5 to 25 mm²

Principle: separate tightening of the ground cable and the belt.

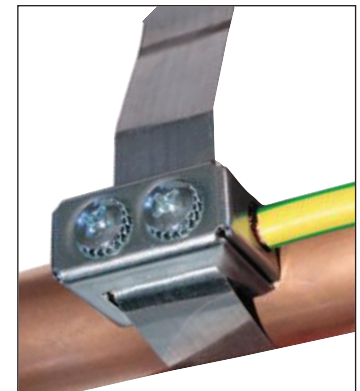
| type | artide number | for cable mm ² | for tube Ø mm | length mm | weight g/pce | width mm | thickness mm | | |
|-------|---------------|---------------------------|---------------|-----------|--------------|----------|--------------|---|--|
| T25-2 | 0619 0008 000 | 1,5 ... 25 | 15 ... 48 | 195 | 51 | 25 | 0,25 | 7 | |
| T25-3 | 0619 0009 000 | 1,5 ... 25 | 15 ... 88 | 330 | 59 | 25 | 0,25 | 6 | |



• Earth straps 2,5 to 50 mm²

Principle: double acting clamping. Contact is ensured by crushing the ground cable between the 2 layers of the tensioner.

| type | artide number | for cable mm ² | for tube Ø mm | length mm | weight g/pce | width mm | thickness mm | | |
|------|---------------|---------------------------|---------------|-----------|--------------|----------|--------------|----|--|
| T 11 | 0619 0007 000 | 2,5 ... 6 | 8 ... 28 | 150 | 5 | 6 | 0,25 | 20 | |
| T 12 | 0619 0003 000 | 2,5 ... 10 | 16 ... 48 | 190 | 17 | 10 | 0,25 | 16 | |
| T 13 | 0619 0004 000 | 2,5 ... 10 | 16 ... 88 | 325 | 20 | 10 | 0,25 | 15 | |
| T 2 | 0619 0001 000 | 10 ... 16 | 16 ... 48 | 190 | 53 | 25 | 0,25 | 7 | |
| T 3 | 0619 0002 000 | 10 ... 16 | 16 ... 88 | 325 | 61 | 25 | 0,25 | 6 | |
| T 33 | 0619 0005 000 | 25 ... 35 | 16 ... 88 | 325 | 61 | 25 | 0,25 | 6 | |
| T 50 | 0619 0006 000 | 50 | 16 ... 88 | 330 | 100 | 32 | 0,25 | 1 | |



Bag available with a European suspension hole.

• Tool for earth straps PLIOTER T11 - T12 - T13

| type | artide number | |
|--------|---------------|---|
| T-2000 | 0619 0050 000 | 1 |

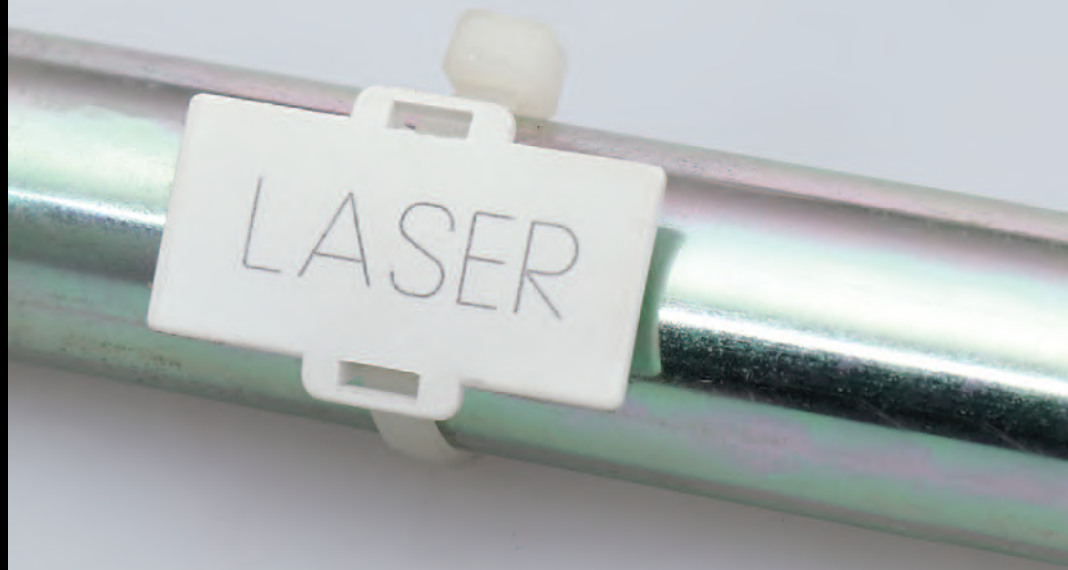


For clamping and cutting our earth straps T11, T12 and T13.



C14

Cable ties accessories



Cable tie bases for SES-QUICK cable tie



SES-QUICK



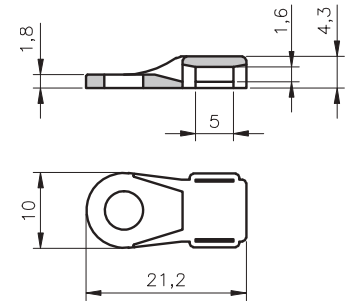
Cable tie base MB-123

Material: polyamide 6.6
Colour: natural
Operating temperatures: -40 to +85°C
Flame resistance: V2 UL94



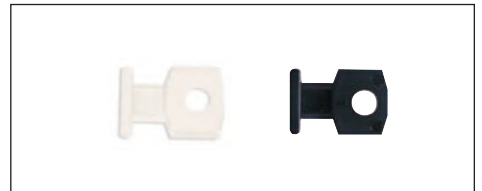
C12/3-...: Also available in version sensitive to metal detector.

| type | article number | for cable ties max. width mm | fixing by screw Ø mm | |
|-------------|----------------|------------------------------------|----------------------------|-----|
| MB-123-C | 0186 0922 018 | 4,8 | 5 | 100 |
| MB-123.35-C | 0186 0924 018 | 4,8 | 3 | 100 |

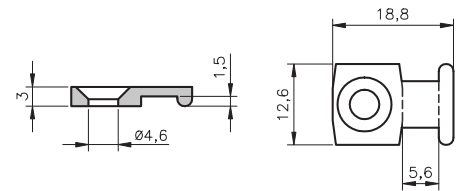


Cable tie base SM-8

Material: polyamide 6
Colours: natural - black
Operating temperatures: -20 to +70°C
Flame resistance: V2 UL94



| type | article number | | for cable ties max. width mm | fixing by screw Ø mm | |
|--------|----------------|---------------|------------------------------------|----------------------------|-----|
| | natural (NL) | black (BK) | | | |
| SM-8-C | 0186 0910 018 | 0186 0910 010 | 4,8 | 4,6 | 100 |

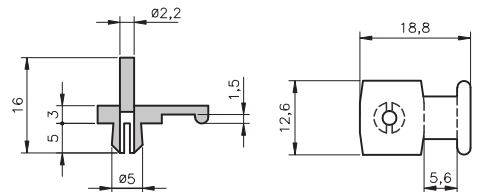


Cable tie base with rivet K50 / K60

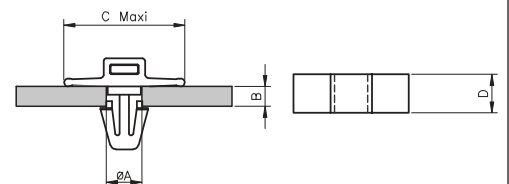
Material: polyamide 6
Colours: natural - black
Operating temperatures: -20 to +70°C
Flame resistance: V2 UL94



| type | article number | for cable ties max. width mm | boring Ø mm | |
|--------|----------------|------------------------------------|-------------------|-----|
| K-50-C | 0186 0920 018 | 4,8 | 4,6 | 100 |



| type | article number | | dimensions (mm) | | | | for cable ties max. width mm | |
|--------|----------------|---------------|-----------------|-----------|------|-----|------------------------------------|-----|
| | natural (NL) | noir (BK) | ØA | B | C | D | | |
| K50-27 | 0186 0934 018 | 0186 0934 010 | 5...5,4 | 0,8...2,7 | 18,5 | 7 | 3,6 | 100 |
| K50-36 | 0186 0933 018 | 0186 0933 010 | 5...5,4 | 1...3,6 | 20,5 | 7 | 3,6 | 100 |
| K60-27 | 0186 0932 018 | 0186 0932 010 | 6...6,4 | 0,8...2,7 | 22 | 9,5 | 4,7 | 100 |
| K60-36 | 0186 0931 018 | 0186 0931 010 | 6...6,4 | 1...3,6 | 23,5 | 9,5 | 4,7 | 100 |



Accessories - tie bases for SES-QUICK cable ties

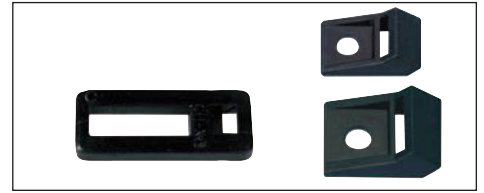


SES-QUICK

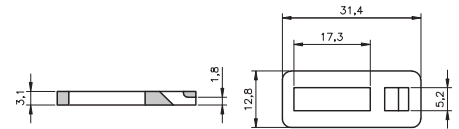


Tie base CH-X / CB-S

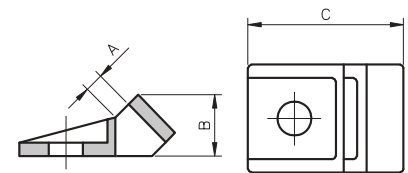
Material: polyamide 6
Colour: black
Operating temperatures: -20 to +70°C
Flame resistance: V2 UL94



| type | article number | for cable ties max. width mm | fixing by screw Ø mm | |
|------|----------------|------------------------------------|----------------------------|----|
| CH-X | 0127 0031 010 | 4,7 | 5 | 50 |

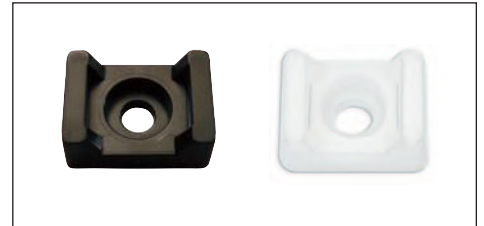
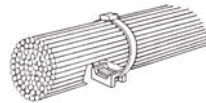


| type | article number | dimensions (mm) | | | for cable ties max. width mm | fixing by screw Ø mm | |
|--------|----------------|-----------------|-----|------|------------------------------------|----------------------------|----|
| | | A | B | C | | | |
| CB-S8 | 0127 0046 010 | 2,5 | 8 | 19 | 7,6 | 4 | 50 |
| CB-S12 | 0127 0050 010 | 2,8 | 9,2 | 23,5 | 9 | 5 | 50 |



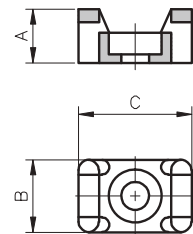
Tie cradle TM

Material: polyamide 6.6
Colours: natural - black
Operating temperatures: -40 to +85°C
Flame resistance: V2 UL94



C12/3-...: Also available in version sensitive to metal detector.

| type | article number | | dimensions (mm) | | | for cable ties max. width mm | fixing by screw Ø mm | |
|---------|----------------|---------------|-----------------|------|------|------------------------------------|----------------------------|-----|
| | natural | black | A | B | C | | | |
| TM-2S6 | 0186 0925 018 | 0186 0925 010 | 6,9 | 9,5 | 14,9 | 4,7 | 3,5 | 100 |
| TM-2S8 | 0186 0926 018 | 0186 0926 010 | 6,9 | 9,5 | 14,9 | 4,7 | 4,3 | 100 |
| TM-3S8 | 0186 0930 018 | 0186 0930 010 | 9,7 | 15,9 | 22,2 | 9 | 4 | 100 |
| TM-3S10 | 0186 0530 018 | 0186 0530 010 | 9,7 | 15,9 | 22,2 | 9 | 4,5 | 100 |

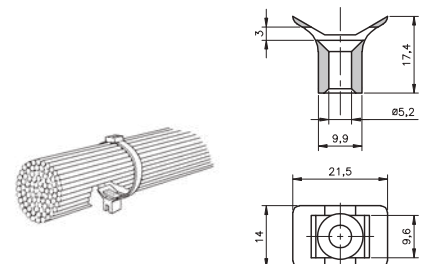


Stand off cradle CH-935

| | | |
|--------------------------------|-------------------|---------------------|
| Material: | polyamide 6 (PA6) | polyamide 12 (PA12) |
| Colour: | black | black |
| Operating temperatures: | -20 to +70°C | -40 to +60°C |
| Flame resistance: | V2 UL94 | HB UL94 |



| type | article number | material | for cable ties max width mm | fixing by screw Ø mm | |
|-----------|----------------|----------|-----------------------------------|----------------------------|-----|
| CH-935-6 | 0189 0536 010 | PA 6 | 9 | 5 | 100 |
| CH-935-12 | 0189 0535 010 | PA 12 | 9 | 5 | 100 |



Accessories and tie bases for SES-QUICK cable ties

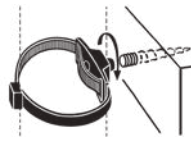


SES-QUICK

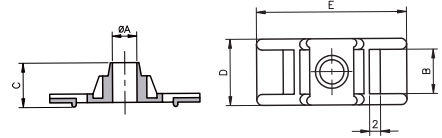


Screw fixing mount CH-S / CH-S8

Material: polyamide 6
Colour: black
Operating temperatures: -20 to +70°C
Flame resistance: V2 UL94



| type | article number | dimensions (mm) | | | | | E | for cable ties max. width mm | fixing by screw Ø mm | 50 |
|-------|----------------|-----------------|-----|----|-----|----|-----|------------------------------------|----------------------------|----|
| | | ØA | B | C | D | D | | | | |
| CH-S | 0127 0038 010 | 5,6 | 5,5 | 9 | 8,5 | 22 | 4,7 | 5,6 | 50 | |
| CH-S8 | 0127 0039 010 | 5,3 | 9 | 10 | 15 | 34 | 9 | 5,3 | 50 | |

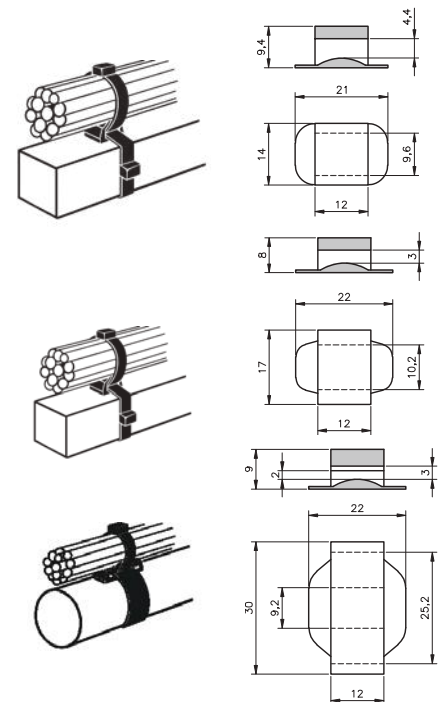


Double tie base CH-936

| | | |
|--------------------------------|-------------------|---------------------|
| Material: | polyamide 6 (PA6) | polyamide 12 (PA12) |
| Colour: | black | black |
| Operating temperatures: | -20 to +70°C | -40 to +60°C |
| Flame resistance: | V2 UL94 | HB UL94 |

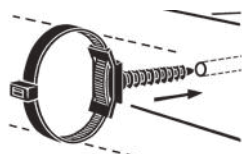


| type | article number | material | for cable ties max. width mm | 50 |
|-----------|----------------|----------|------------------------------------|-----|
| CH-936-6 | 0189 0516 010 | PA 6 | 2 x 9 | 100 |
| CH-936-12 | 0189 0515 010 | PA 12 | 2 x 9 | 100 |
| CH-V | 0127 0048 010 | PA 6 | 2 x 9 | 50 |
| CH-W | 0127 0047 010 | PA 6 | 1x 25 + 1x 9 | 50 |

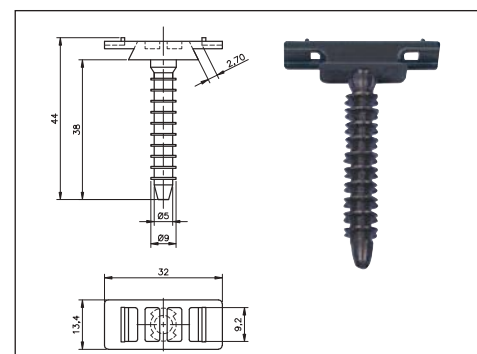


Wall plug CH-C8

Material: polyamide 12
Colour: black
Operating temperatures: -40 to +60°C
Flame resistance: HB UL94



| type | article number | for cable ties max. width mm | Ø boring mm | 50 |
|-------|----------------|------------------------------------|-------------------|----|
| CH-C8 | 0127 0045 010 | 9 | 7 | 50 |



Accessories

for SES-QUICK cable ties

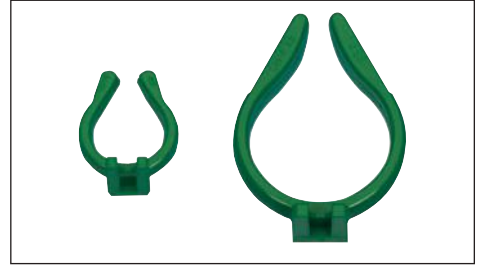
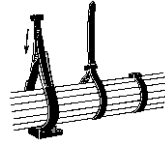


SES-QUICK

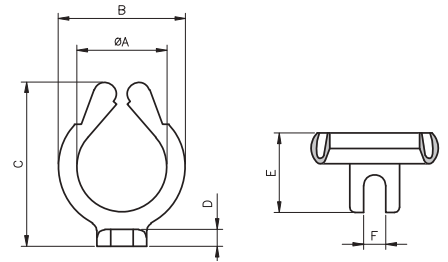


Cable support CH-F

Material: polyacetal - polyoxymethylene (POM)
Colour: green
Operating temperatures: -20 to +100°C
Flame resistance: HB UL94

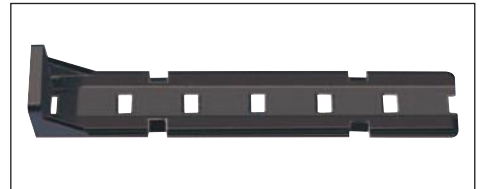
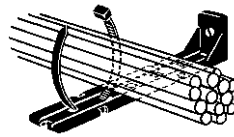


| type | article number | dimensions (mm) | | | | | | | for cable ties max. width mm | |
|--------|----------------|-----------------|------|----|-----|------|-----|-----|------------------------------------|--|
| | | ØA | B | C | D | E | F | | | |
| CH-F17 | 0127 0034 003 | 17 | 24 | 31 | 3,2 | 15 | 4,2 | 4,8 | 25 | |
| CH-F33 | 0127 0035 003 | 33 | 41,4 | 57 | 3,5 | 17,5 | 5,2 | 4,8 | 25 | |

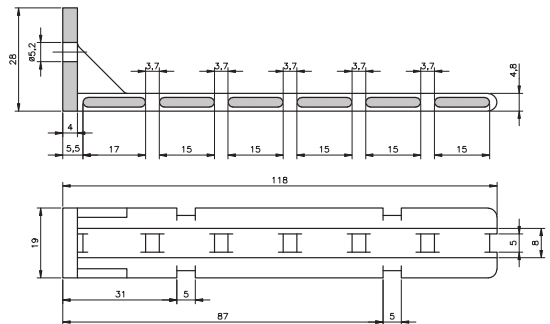


Cable tie base CH-J

Material: polyamide 6.6
Colour: black
Operating temperatures: -40 to +85°C
Flame resistance: V2 UL94

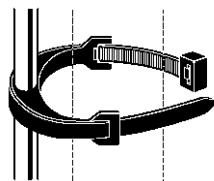


| type | article number | for cable ties max. width mm | |
|------|----------------|------------------------------------|--|
| | | | |

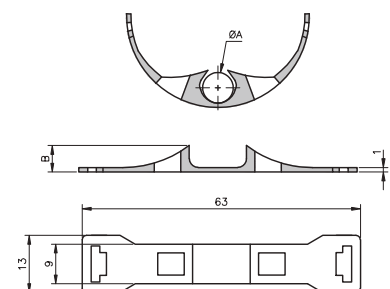


Anchoring collar CH-B

Material: polyamide 12
Colour: black
Operating temperatures: -40 to +60°C
Flame resistance: HB UL94



| type | article number | dimensions (mm) | | for cable ties max. width mm | |
|-------|----------------|-----------------|-----|------------------------------------|----|
| | | ØA | B | | |
| CH-B5 | 0127 0042 010 | <5 | 4,5 | 7,6 | 50 |
| CH-B7 | 0127 0043 010 | 6-7 | 6 | 7,6 | 50 |



Write-on plates CH-M for SES-QUICK cable ties



SES-QUICK



CH-M

| | Colors | White |
|---------------------------|---------------|---------------|
| Material: | Polyethylene | Polypropylene |
| Temperature range: | -50 to + 85°C | -20 to + 65°C |

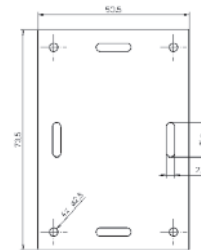
Application: for the identification of cables, conduits and posts, both outdoor and underground, particularly in the field of telecommunications.

Write-on plate for cable ties or screws.

Designed for marking with a nylon tip pen or with a cold marking press (LASER printing on request).



| type | art. no. | colours* | |
|------------|---------------|----------|-----|
| CH-M PP WH | 0140 0025 001 | white | 100 |
| CH-M PE BK | 0140 0026 010 | black | 100 |
| CH-M PE GN | 0140 0027 003 | green | 100 |
| CH-M PE RD | 0140 0028 007 | red | 100 |
| CH-M PE BU | 0140 0023 002 | blue | 100 |
| CH-M PE OG | 0140 0024 005 | orange | 100 |
| CH-M PE YE | 0140 0022 004 | yellow | 100 |



* Other colours on request.



C14/5-01 - QUICK-MARKERS
printing



B13/5-01 - SES-PREMO



C12/1-01 - SES-QUICK SL



LASER



Write-on plates for SES-QUICK cable ties



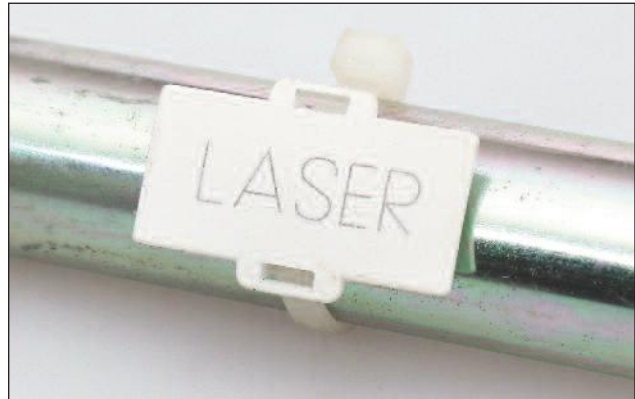
SES-QUICK


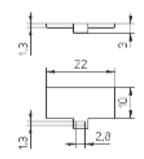

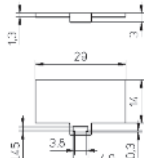

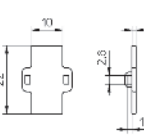

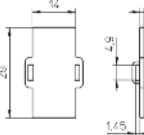

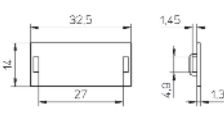

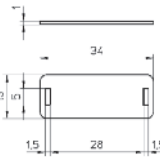

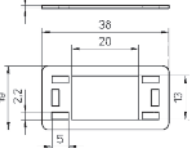



CH-...

| | | |
|--------------------------------|--------------|--------------|
| Material: | PA 6 | PE |
| Colour: | white | black |
| Operating temperatures: | -20 to +85°C | -50 to +85°C |
| Flame resistance: | V2 UL94 | - |

Application: for the identification of cables, conduits and posts. Marking with a nylon tip pen or self-adhesive labels. LASER printing on request.



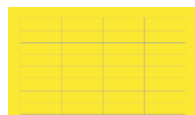
| type | code article | dimensions mm | width cable ties (mm) |  | | |
|-------------------|---------------|---------------|-----------------------|---|--|---|
| CH-AQ 22x10 PA WH | 0140 0101 001 | 22 x 10 | < 2,6 | 100 |  |  |
| CH-AQ 22x10 PE BK | 0140 0111 010 | | | | | |
| CH-AQ 29x14 PA WH | 0140 0102 001 | 29 x 14 | < 4,6 | 100 |  |  |
| CH-AR 22x10 PA WH | 0140 0103 001 | 22 x 10 | < 2,6 | 100 |  |  |
| CH-AT 29x14 PA WH | 0140 0104 001 | 29 x 14 | < 4,6 | 100 |  |  |
| CH-AT 29x14 PE BK | 0140 0114 010 | | | | | |
| CH-AL 32x14 PA WH | 0140 0105 001 | 32,5 x 14 | < 4,6 | 100 |  |  |
| CH-AL 32x14 PE BK | 0140 0115 010 | | | | | |
| CH-Z PA WH | 0140 0021 001 | 34 x 13 | < 4,6 | 100 |  |  |
| CH-Z PE BK | 0140 0041 010 | | | | | |
| CH-P PA WH | 0140 0020 001 | 38 x 19 | < 4,6 | 100 |  |  |
| CH-P PE BK | 0140 0040 010 | | | | | |



C14/5-01 - QUICK-MARKERS



B2/7-02 - SPOT-IT strips



LASER printing on request



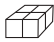




C12/1-01 - SES-QUICK SL





• **QUICK-MARKERS pens with Nylon point**

Indelible marker pens to identify our write-on ties, EV-marker cards and insulating and heat-shrinkable sleeveings.

| type | art. no. | colours | Nylon Point |  | |
|---------------------------|---------------|---------|--------------|---|---|
| EV-permanent | 0307 0501 010 | black | medium-sized | 1 |  |
| PLIO-404 permanent | 0307 0502 010 | black | fine | 1 |  |
| PLIO-404 permanent | 0307 0503 007 | red | fine | 1 |  |
| PLIO-780 opak | 0307 0504 001 | white | fine | 1 |  |



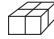
C15

Cable ties for installations





| | SM6 | SM66+ | SM12 |
|-----------------------------|---|-----------------------------------|---|
| Material: | Polyamide 6 | Polyamide 6.6 modified | Polyamide 12 |
| Colours: | black | black | black |
| Temperatures of use: | -20 to +70°C +120°C short time | -40 to +70°C +120°C short time | -40 to +60°C +120°C short time |
| Specifications: | good resistance against U.V. V2 UL94 | protected against U.V. HB UL94 | protected against U.V. conform to norm NFC20540 HB UL94 |
| Application: | For indoor use | For indoor and outdoor use | For indoor and outdoor use |

| type | article number | dimensions length x width mm | maximum bundle Ø mm | tensile strenght mini. daN |  |
|--|----------------|------------------------------------|---------------------------|----------------------------------|---|
| Cable ties for installations SM6 (in bags) | | | | | |
| SM6-183/60 BK-C* | 0189 0050 010 | 183 x 6 | 43 | 30 | 100 |
| SM6-183/90 BK-C* | 0189 0060 010 | 183 x 9 | 41 | 40 | 100 |
| SM6-265/90 BK-C | 0189 0070 010 | 265 x 9 | 63 | 51 | 100 |
| SM6-355/90 BK-C | 0189 0080 010 | 355 x 9 | 90 | 51 | 100 |
| Cable ties for installations SM66+ (in boxes) | | | | | |
| SM66+ 183/90 BK-C* | 0189 0201 010 | 183 x 9 | 41 | 40 | 100 |
| SM66+ 265/90 BK-C | 0189 0202 010 | 265 x 9 | 63 | 51 | 100 |
| SM66+ 355/90 BK-C | 0189 0203 010 | 355 x 9 | 90 | 51 | 100 |
| Cable ties for installations SM12 (in boxes) | | | | | |
| SM12-183/60 BK-C* | 0189 0105 010 | 183 x 6 | 43 | 30 | 100 |
| SM12-130/90 BK-C* | 0189 0165 010 | 130 x 9 | 25 | 40 | 100 |
| SM12-183/90 BK-C* | 0189 0115 010 | 183 x 9 | 41 | 40 | 100 |
| SM12-265/90 BK-C | 0189 0125 010 | 265 x 9 | 63 | 51 | 100 |
| SM12-355/90 BK-C | 0189 0135 010 | 355 x 9 | 90 | 51 | 100 |
| SM12-550/90 BK-C | 0189 0145 010 | 550 x 9 | 150 | 55 | 100 |
| SM12-780/90 BK-C | 0189 0155 010 | 780 x 9 | 225 | 55 | 100 |



* Cable tie with "simple head".




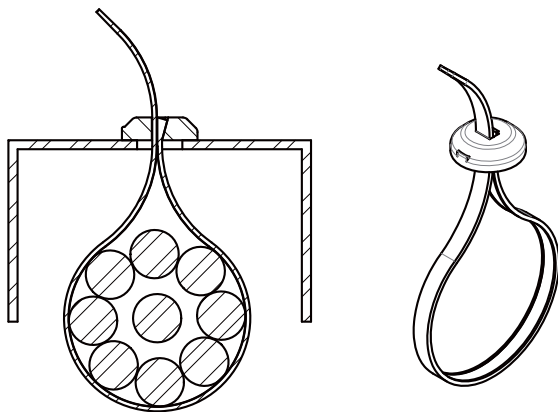
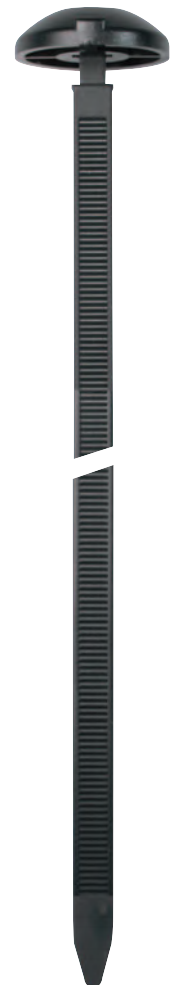
SES-SC

Material: polyamide 6.6 HT, UV stabilized
Colour: black
Temperatures of use: -40 to +105°C
Flame resistance: V2 UL94

Applications : system for attachment through the wall, with a blanking head which covers hole both inside and outside of the chassis (designed specifically for the automotive industry).
 Dome head to facilitate the passage of the cables in the chassis.



| type | artide number | dimensions length x width mm | head Ø mm | maximum bundle Ø mm | tensile strenght mini. daN |  |
|----------------|---------------|------------------------------------|--------------|---------------------------|----------------------------------|---|
| 300/61 SC BK-C | 0186 0471 010 | 280 x 6 | 25 | 80 | 30 | 100 |



Accessories- tie bases SES for cable ties SL - SE - SR and SM lashing ties

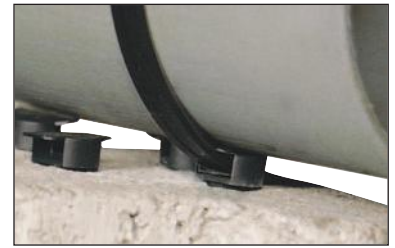



SES

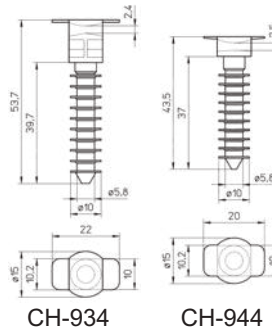


• Wall plug

The tie bases with wall plug in polyamide, black colour, are designed to be used with our cable ties for installation series SM width 90 mm. It is recommended to use the tie bases in PA6 for an interior use and the tie bases in PA12 for an external use.

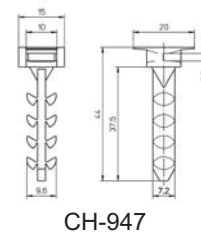
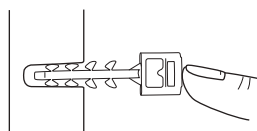
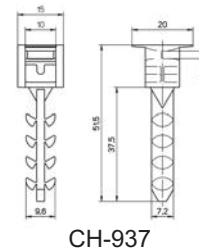


| type | artide number | material | cable ties section max. | Ø bore mm | bore depth mm |  |
|---------------------------|---------------|----------|-------------------------|-----------|---------------|---|
| Mounting with tool | | | | | | |
| CH-934- 6 | 0189 0526 010 | PA 6 | 2,4 x 10 | 8 | 41 | 100 |
| CH-934-12 | 0189 0525 010 | PA12 | 2,4 x 10 | 8 | 41 | 100 |
| CH-944- 6 | 0189 0540 010 | PA 6 | 2,5 x 10 | 8 | 38 | 100 |
| CH-944-12 | 0189 0530 010 | PA12 | 2,5 x 10 | 8 | 38 | 100 |



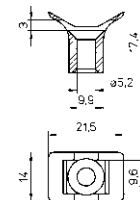
Manual mounting

| | | | | | | |
|-----------|---------------|------|----------|---|----|-----|
| CH-937- 6 | 0189 0541 010 | PA 6 | 2,4 x 10 | 8 | 40 | 100 |
| CH-937-12 | 0189 0542 010 | PA12 | 2,4 x 10 | 8 | 40 | 100 |
| CH-947- 6 | 0189 0543 010 | PA 6 | 2,5 x 10 | 8 | 40 | 100 |
| CH-947-12 | 0189 0544 010 | PA12 | 2,5 x 10 | 8 | 40 | 100 |



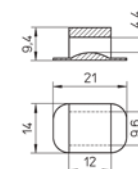
• CH-935 wall plug with cradle in black PA 6 and PA 12

| | | | | | | |
|-----------------------|---------------|---|--|--|--|-----|
| in black PA 6 | | | | | | |
| CH-935-6 | 0189 0536 010 | wall plug in Vé for ties of max. section 3 x 9,6 mm | | | | 100 |
| in black PA 12 | | | | | | |
| CH-935-12 | 0189 0535 010 | fixing by screw TF 5 mm | | | | 100 |



• CH-936 double wall plug in black PA 6 and PA 12

| | | | | | | |
|-----------------------|---------------|--|--|--|--|-----|
| in black PA 6 | | | | | | |
| CH-936-6 | 0189 0516 010 | double wall plug for 2 ties of max. passing section 4,4 x 9,6 mm | | | | 100 |
| in black PA 12 | | | | | | |
| CH-936-12 | 0189 0515 010 | | | | | 100 |





C16

Cables tie tools for SES
cable ties



Cable tie tools for cable ties SES-QUICK



SES

F-50

Handle: plastic
Length: 170 mm
Width: 70 mm
Weight: 60 g

Application: simple cable tie tool, without dynamometric cutting device for cable ties SES-QUICK up to 4,8 mm width.

 < 4,8 mm




| | | |
|------|---------------|---|
| F-50 | 0686 0800 000 |  1 |
|------|---------------|---|

F-200

Handle: plastic
Tensile strength: 4 to 11 daN (4 tensile strengths)
Length: 160 mm
Width: 130 mm
Weight: 200 g

Application: adjustable dynamometric tool for cable ties up to 4,8 mm width. When cables are bundled at the required strength, the excess tie tail is automatically cropped.

 < 4,8 mm



| | | |
|-------|---------------|---|
| F-200 | 0686 0750 000 |  1 |
|-------|---------------|---|

SES-HD

Handle: plastic
Tensile strength: 2,5 to 14 daN (4 tensile strengths)
Length: 160 mm
Width: 130 mm
Weight: 200 g

Application: comfortable and ergonomic adjustable dynamometric tool for cable ties up to 7,8 mm width. When cables are bundled at the required strength, the excess tie tail is automatically cropped.

 < 7,8 mm



| | | |
|--------|---------------|---|
| SES-HD | 0686 0700 000 |  1 |
|--------|---------------|---|

Cable tie tools for cable ties SES-QUICK



SES

F-301

| | |
|--------------------------|-----------------------------------|
| Handle: | plastic |
| Tensile strength: | 4 to 11 daN (8 tensile strengths) |
| Length: | 170 mm |
| Width: | 130 mm |
| Weight: | 270 g |

Application: comfortable and ergonomic adjustable dynamometric tool for SES-QUICK cable ties up to 4,8 mm width. When cables are bundled at the required strength, the excess tie tail is automatically cropped.

 < 4,8 mm




| type | artide number |  |
|-------|---------------|---|
| F-301 | 0686 0551 000 | 1 |

F-350

| | |
|--------------------------|----------------------------------|
| Handle: | metallic |
| Tensile strength: | 1 to 9 daN (4 tensile strengths) |
| Length: | 160 mm |
| Width: | 130 mm |
| Weight: | 300 g |

Application: adjustable dynamometric tool for SES-QUICK cable ties up to 4,8 mm width. When cables are bundled at the required strength, the excess tie tail is automatically cropped.

 < 4,8 mm



| type | artide number |  |
|-------|---------------|---|
| F-350 | 0686 0550 000 | 1 |

Cable tie tools for lashing ties SES-SM




SES

F-90

Handle: metallic
Length: 190 mm
Width: 100 mm
Weight: 300 g

Application: tool without dynamometric device for lashing ties SM, SE and SL from 7,6 to 9 mm width. When cables are bundled to the required strength, press on the small handle to cut off the excess tie tail.

 7,6 ... 9 mm



| type | artide number |  |
|------|---------------|---|
| F-90 | 0686 0600 000 | 1 |

F-95

Handle: metallic
Length: 200 mm
Width: 90 mm
Weight: 320 g

Application: tool with dynamometric device for lashing ties SM, SE, SL and LT from 7,6 to 13 mm width. When cables are bundled at the required strength, the excess tie tail is automatically cropped.

 7,6 ... 13 mm



| type | artide number |  |
|------|---------------|---|
| F-95 | 0686 0610 000 | 1 |