

AGRO facade feedthrough

The innovative new Syntec[®] facade feedthrough: easy to install and seals effectively without thermal bridges.

The innovative solution for facade and window systems



Syntec® facade feedthrough

AGRO has developed an innovative cable entry solution for facades and windows. For the first time, the “pluggable” Syntec® facade feedthrough (with push-in connection) now makes it possible to feed cables through the building envelope, thus ensuring proper sealing and avoiding the formation of thermal bridges via a system that can be quickly installed externally. This enables electrical equipment such as window blinds and shades, lighting and monitoring systems, as well as sensors of any sort, to be easily connected to the building's internal cable network.



Application area of the new Syntec® facade feedthrough

Since cable feedthroughs are often incorporated into the production of windows and facade elements, AGRO has developed the new product with leading facade and window manufacturers. The goal was to design the feedthrough to be flexible, quick and easy to use when cables are pulled through a completed facade, while still ensuring proper sealing at the building shell. It was also necessary to consider the sometimes very limited space available in window frames and other structural elements, which until now have made it difficult to integrate cable conduits into their design. Finally, the new solution should also enable the cables it accommodates to be replaced without difficulty.

The new Syntec® facade feedthrough was developed on the basis of these requirements: a unique combination of an externally “pluggable” conduit connection fitting and an integrated cable gland. This presents new possibilities for designers and for manufacturers of windows and other facade elements, especially as it is often not possible to include a nut fitting or a product with an internal thread into the design of such structural elements. With this innovative solution from AGRO, the conduit is simply fed through the appropriate hole in the facade element and securely pushed into the Syntec® facade feedthrough, which is then firmly locked in place using its “pluggable” lower part, into the facade and window frame. Following insertion of the cable, which is clamped in the feedthrough in a way that provides proper sealing and strain relief, the installation is complete, without the formation of a thermal bridge.

A comprehensive product range for facade and window systems



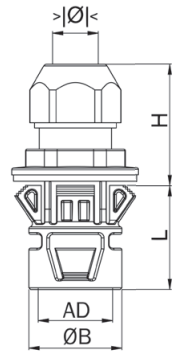
With this addition, we now offer a comprehensive and diverse range of products for facade and window systems.

- 1 The new Syntec® facade feedthrough with push-in connection – the basic element.
- 2 Syntec® and Progress® cable glands (plastic).
- 3 Plastic conduits and conduit glands.
- 4 Sleeve/collar fittings and supplementary products such as Quickseal cable grommets, etc.

The Syntec® facade feedthrough with push-in connection

Technical details

Material:	Polyamide PA 6 halogen-free
Sealing ring:	TPE
Sealing washer:	EPDM
Protection class:	IP 66
Temperature range:	-30 °C / +100 °C
Strain relief:	Version A acc. to EN 62444
Sheet thickness:	1 - 4 mm
Application:	Facade and window systems, machine and plant systems automotive, automation, electrical installation



Syntec® facade feedthrough
Black

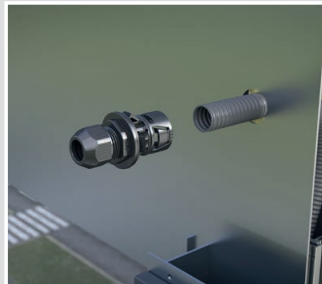
AD mm	ØB mm	mm	> Ø < min mm	> Ø < max mm	mm	H mm	L mm	Art.-No.	
21.2	27.0	27.5	3.5	8.0	27/24	30	33	1545.99.08	50
21.2	27.0	27.5	7.0	13.0	27/24	30	33	1545.99.13	50



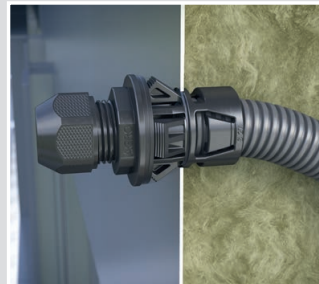
Simple assembly



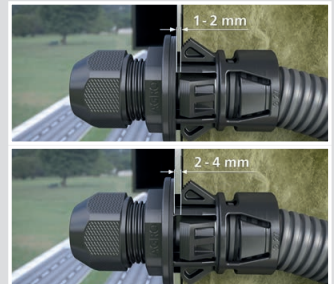
Guide the protective conduit through the facade



Click the conduit into the Syntec® facade feedthrough



Click the Syntec® facade feedthrough into place in the facade



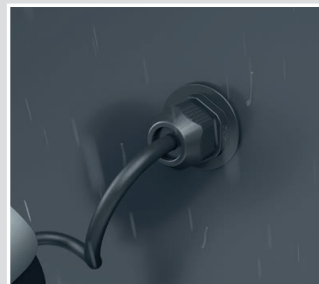
Sheet thickness 1 - 2 mm (2 sealing),
Sheet thickness 2 - 4 mm (1 sealing)



Quick and easy installation from the outside



Pull the cable through and tighten the compression nut with a spanner



The innovative Syntec® facade feedthrough is well able to withstand the effects of rain and wind



Free of thermal bridges and well sealed (IP 66)

Systems und solutions

for the professional cable entries and electrical installation.

AGRO has been developing and manufacturing systems and products as the basis for good installation since 1953. Planners and installers use the practice-oriented solutions internationally for their daily tasks in all areas of installation.



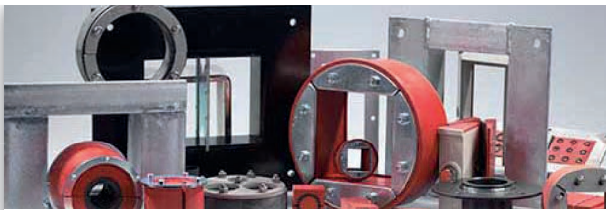
Cable glands.

Progress® and Syntec® cable glands. For cables, the best.



Protective cable conduits.

Products for applications in mechanical engineering, facilities construction, automobile and rolling stock manufacture, automation and energy engineering.



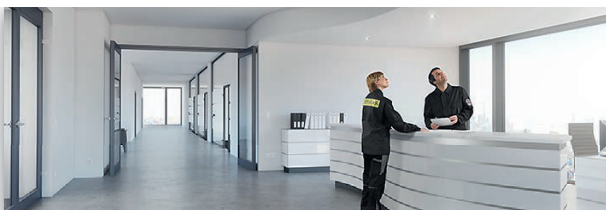
Cable penetrations.

Modular cable and pipe penetrations. Watertight and gastight.



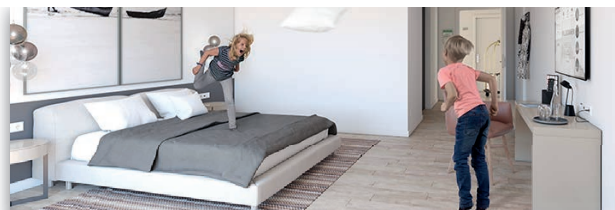
Energy efficiency.

Innovative AGRO products support you in satisfying the increasing energy-related demands of national and regional authorities.



Fire protection.

AGRO fire protection systems offer reliable solutions for electro-installations in fire walls and fire protection floors and ceilings.



Noise insulation.

AGRO's innovative sound insulation boxes are suitable for use in noise insulation walls, even in the case of flushmounted installations.

Technical information and advice

For further information about our products, system solutions and communication media, please visit our website: www.agro.ch

Our team of technical advisors will be happy to answer any questions you may have or provide further information, and looks forward to speaking with you: **+41 (0)62 889 47 47**

