
ABB Inc.

601 Shiloh Road
Plano, TX 75074
USA
+1 877 546 3243

www.gecriticalpower.com



End-to-end embedded power

Product matrix

AC-DC and DC-DC power supplies

I _{OUT} \ V _{OUT}	380 V	65 V	58 V	54 V	53 V	52 V	48 V	32 V	28 V	24 V	23 V	18 V	12 V	5 V
250 A													CAR3012TE	
208 A													CAR2512TE	
													CAR2512DC	
166 A													CAR2012TE	
150 A													CAR1812FP	
133 A													CAR1612FP	
100 A													CAR1212FP	
													CAR1212DC	
83.3 A														
70.8 A														
65 A														
62.5 A														
60 A														
55 A														
52 A														
50 A														
45 A														
41.6 A														
40 A														
37.5 A														
33 A														
31.25 A														
30 A														
25 A														

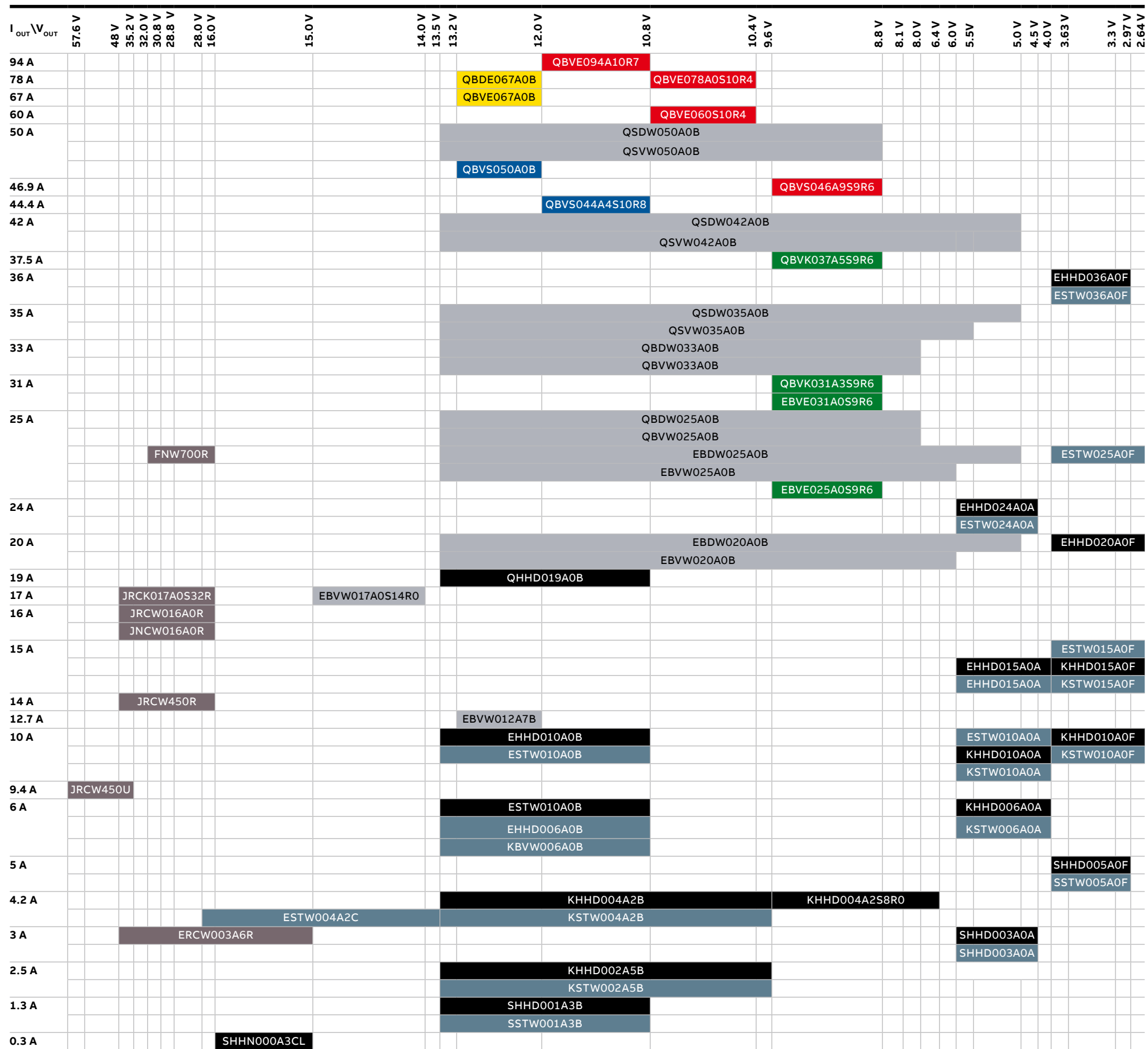
I _{OUT} \ V _{OUT}	380 V	65 V	58 V	54 V	53 V	52 V	48 V	32 V	28 V	24 V	18 V	12 V	5 V
20 A													
18.75 A													
16.6 A													
12.5 A													
10 A													
9.4 A													

* 48 V or 54 V default V_{out} available

EP Rectifier (AC in)	CLP (Open Frame, AC in)	CCR (1/2 U)
CP Rectifier (AC in)	CP Converter (DC in)	GP Rectifier (AC in)
CAR Rectifier (AC in)	CAR Converter (DC in)	SLP (1Ux1U)
CP Short Rectifier (AC or HVDC in)	CC Rectifier (AC in)	CH Rectifier (AC in)

www.geindustrial.com/products/embedded-power/ac-dc-power-supplies

Isolated DC-DC converters



First Letter	Package	Third Letter	Comm Interface
S	1x1 brick	D	DOSA PMBus
K	1/16th brick	V and all others	DOSA Analog
E	1/8th brick		
Q	1/4 brick		
N	1/2 brick		
F	full brick		

ProLynx* (9-36Vin)	BARRACUDA* HIGH (Vin = other)
BARRACUDA* HIGH (Vin = 38-55 V)	HAMMERHEAD* (18-75 Vin)
BARRACUDA* HIGH (Vin = 40-60 V)	BARRACUDA* LOW (36-75 Vin)
BARRACUDA* HIGH (Vin = 36-75 V)	ORCA* (36-75 Vin)

