



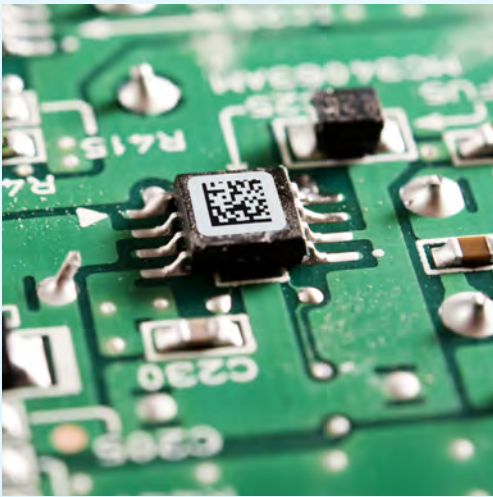
Automated printed circuit board labelling

Enable Smart Manufacturing

Enable Smart Manufacturing

In Smart Manufacturing machines and systems generate, analyse and use data to optimise production efficiency, create flexible manufacturing processes and respond quickly and at low cost to changes in demand. An Industry 4.0 Smart Factory employs only systems that are interconnected and able to send or receive data from the other systems in the supply chain.

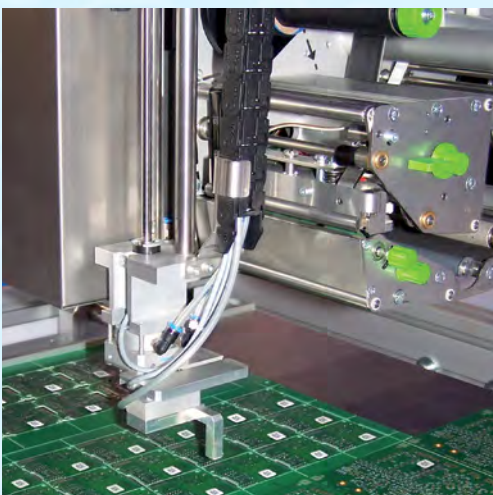
Via durable product labels that remain legible throughout entire production cycles, applied by accurate, automated print & apply systems, Brady can connect every circuit board in production to your Smart Factory. With our solution, every circuit board you produce can become a data generator to send information to your Manufacturing Execution System, to other machines and production cycles, or to your supply chain both up- and downstream.



Label your printed circuit boards

Accurate tracking of raw materials and finished goods throughout production processes can increase production efficiency, open up new markets and attract more customers by enabling a number of competitive advantages:

- increased product quality control
- increased product safety
- increased reputation and brand protection
- reduced counterfeit components
- reduced production process costs
- reduced warranty costs
- reduced product recalls
- legal compliance
- regulatory compliance



Automate your labelling

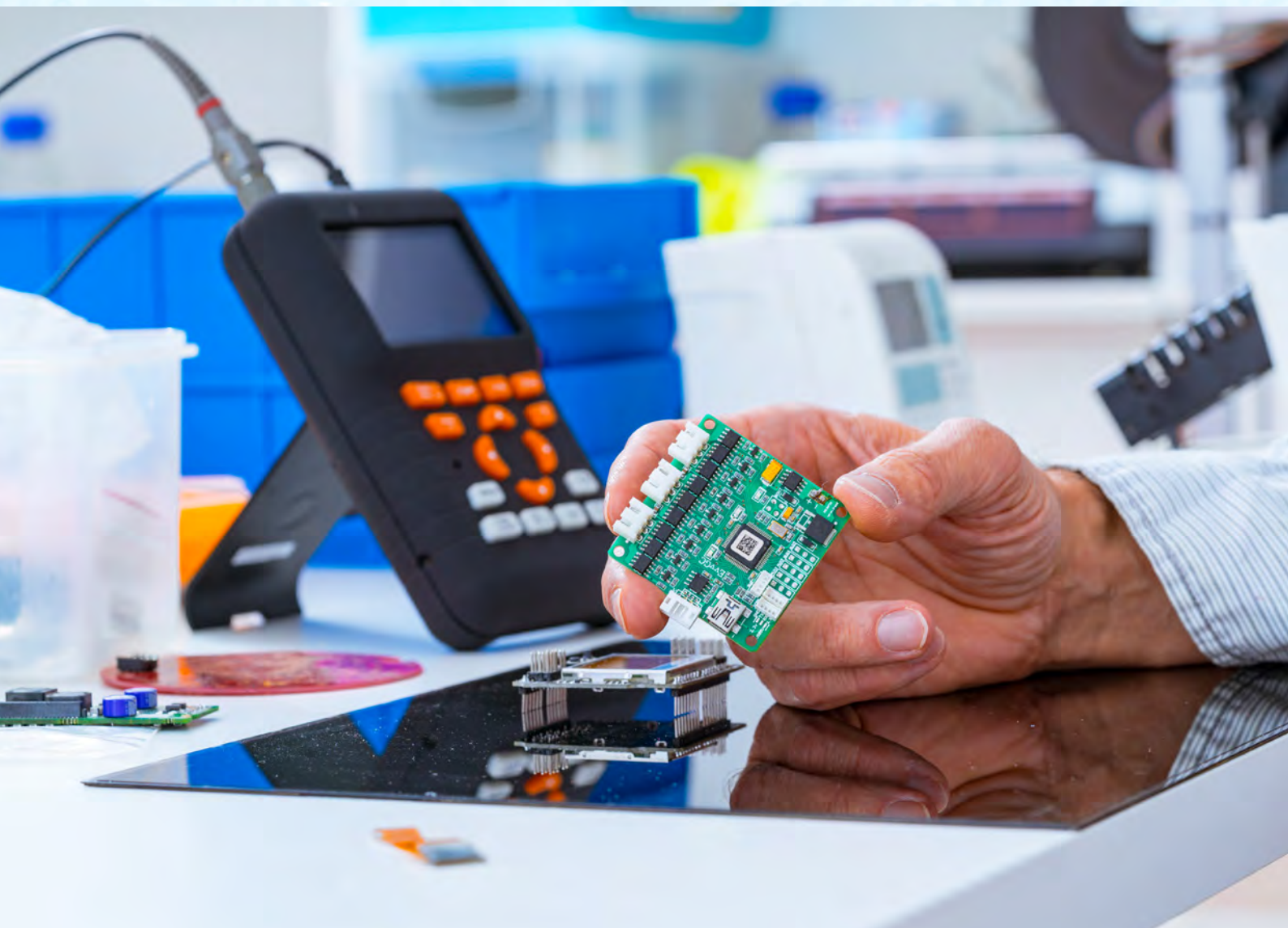
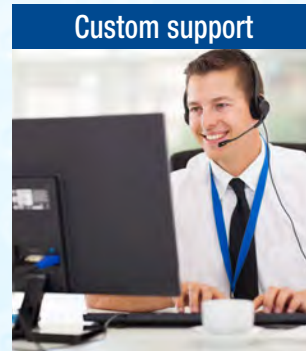
A fully automated printed circuit board labelling solution can activate the competitive advantages of Smart Manufacturing:

- increased workplace efficiency
- more data analysis for continuous improvement
- increased data accuracy
- faster problem intervention
- faster product batch localisation
- aligned raw material intake and machine
- operating parameters

Automated printed circuit board labelling

Brady offers a reliable and complete solution to automate printed circuit board labelling in order to enable Smart Manufacturing. Our solution includes these components:

- durable auto-apply labels
- reliable auto-apply systems
- custom support including setup, maintenance and parts
- extensive label testing in in-house laboratories



Automatic label print & apply

The **BSP61 Print and Apply System** offers a complete solution for fast automatic printed circuit board labelling anywhere along the production line. It combines a robust thermal transfer label printer with a reliable automatic applicator and is designed to consistently print and accurately position and apply labels in almost all manufacturing applications.

The BSP61 Print and Apply System offers

- real time processing with zero queue print & apply
- simultaneous print and apply
- crisp printing at 300 or 600 dpi
- various label size printing
- easy integration in production lines
- high accuracy in various placement angles
- easy connections with existing ERP systems
- ESD safety with anti-static brush
- great reliability with Brady's printed circuit board labels



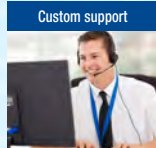
! Zero queue print & apply



Automated print & apply



Durable labels



Custom support



In-house laboratory



Product specifications
on page 10

Automatic label feeding

The **ALF14 label feeder** automates label feeding to your existing pick & place machine. Fast, efficient and easy to use, the ALF14 Label Feeder offers effective automated label feeding and can be implemented anywhere along the production line.

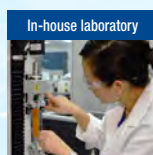
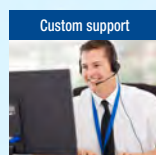
Labels are simply treated like any other component and are placed with the accuracy of your current pick and place machine. The label feeder's compact and durable design allows for flexibility and simplicity.

The ALF14 label feeder offers

- easy label loading and setup
- fast sensing and dispensing
- sends a warning signal when label guiding latch is left open
- easily adjustable liner width to avoid downtime
- compatibility with a wide range of label sizes
- compatibility with a range of pick & place machines
- easy integration thanks to a small footprint
- great durability
- easy signal interfacing for machine compatibility
- great reliability with Brady's printed circuit board labels



! Flexible label feeding



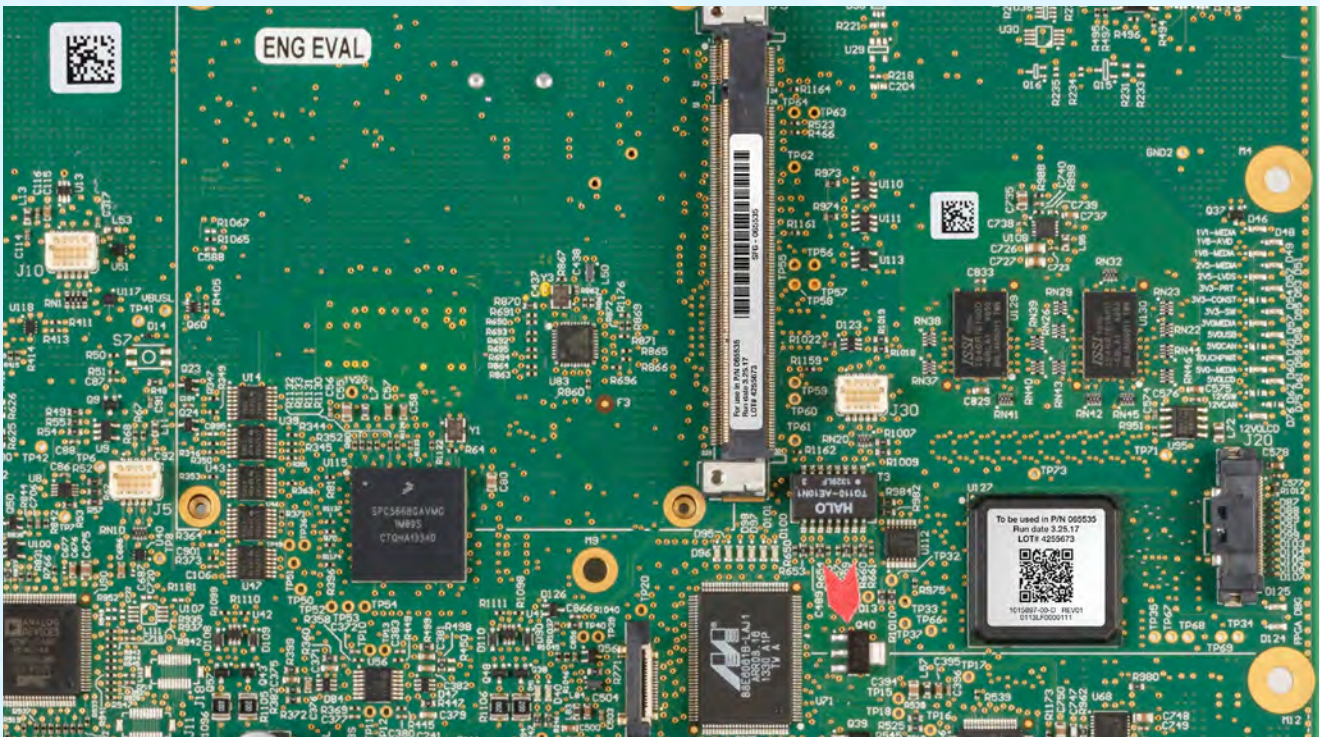
i Product specifications on page 11

Reliable & fast precision printing

The **BradyPrinter i7100 Industrial Label Printer** offers durable and highly accurate label printing for business critical high volume identification challenges in Aerospace, Defence, Mass Transit, Electronics, Automotive and Logistics industries. Quickly print a wide range of high quality identification materials for a variety of applications including cable, printed circuit board and asset & component identification.

The BradyPrinter i7100 Industrial Label Printer offers:

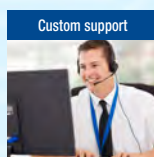
- an easily accessible touch screen interface
- a small system footprint
- fast consumable changes
- a powerful internal processor designed to handle up to 7000 labels per day
- up to 300 mm/sec print speed
- 600 dpi ultra-sharp printing
- centre alignment of prints for high printing accuracy
- interchangeable platen rollers for optimised printhead life time
- a wide range of high quality identification materials



Automated print & apply



Durable labels



Custom support



In-house laboratory



Product specifications
on page 12

Durable printed circuit board labels

Brady's **B-7727 polyimide printed circuit board label** is specifically designed for auto-apply applications. The specially designed APL (Auto Apply Label) range has a reduced liner width and works with a smaller ribbon for ultra-compatibility with auto-apply systems.

B-7727 can withstand temperatures up to 300°C and the powerful chemicals and cleaning processes used in PCB assembly, equipment and component manufacturing.

The B-7727 printed circuit board label offers

- outstanding auto-apply compatibility thanks to a reduced liner width
- great placement accuracy and high pick-up rate
- reduced risk of adhesive bleeding
- extreme washing/aggressive cleaning applications
- top or bottom label placement
- surface mount and through-hole assembly
- high heat (300°C) resistance
- great legibility, even after exposure to chemicals
- good performance in reflow, wave solder and board washing
- abrasion resistance
- printability on-site
- available as pre-printed labels on request



Reduced liner width for ultra auto-apply compatibility (APL range)

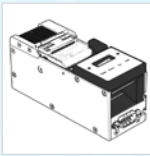


Discover the full auto-apply label (APL) range on pg 13

Compatibility



BSP61



ALF14



i7100



Zestron/Kyzen compatible

Brady's B-7727 printed circuit board label is compatible with cleaning agents from both Kyzen and Zestron. Our B-7727 label can resist the newest PCB cleaning agents.

Automated print & apply



Durable labels



Custom support

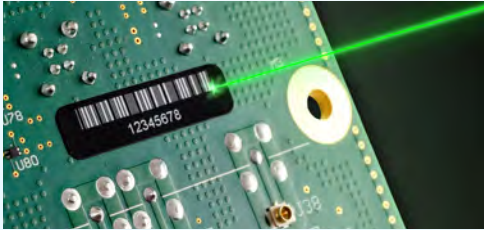


In-house laboratory



Durable printed circuit board labels

Laser engravable labels are designed to increase the legibility of part markings and barcodes lasered on printed circuit boards and complex surfaces. Thanks to increased contrast, barcodes lasered on the label are easier to scan, which leads to reduced waste in supply chains with stringent traceability requirements.



Laser engravable polyimide labels offer:

- high barcode and marking legibility
- durable, high contrast markings
- reduced waste versus direct part marking
- outstanding compatibility with auto-apply systems
- available in black on white and white on black

Why use labels?

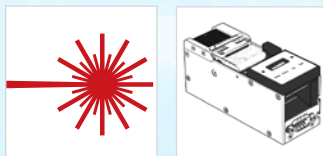
Label identification offers a number of distinct advantages for printed circuit board manufacturers:

Printing Technology Comparison Guide

Attribute	THT Printing	Laser Marking	Direct Marking
Initial equipment costs	Low	Moderate	High
Recurring costs	Moderate	Moderate	Low
Marking permanence	Good	Excellent	Excellent
Print resolution	Good	Excellent	Good
Print speed	Excellent	Good	Poor
Contrast	Excellent	Excellent	Poor*
Bar code grades	Excellent	Excellent	Poor*
Automation	Good	Excellent	Excellent
Air handling	None	Recommended	Required
Easy to re-work	YES	YES	NO

*direct marking color contrast defined by substrate and laser marking mechanism

Compatibility



LASER

ALF14

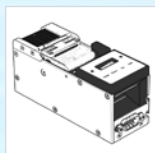
The **B-7634 masking film for PCB's** offers excellent protection during electronic manufacturing processes, including wave soldering and hot air levelling. The polyimide masking film is ideal for auto-apply and can be removed cleanly.



The B-7634 masking film:

- acts as a protective film on PCB's, components and through-holes
- can be used to protect or insulate in a range of high heat applications
- can be applied automatically with a pick & place machine and the ALF14 Label Feeder

Compatibility



Automated print & apply



Durable labels



Custom support



In-house laboratory



Custom support

Service agreements

On top of an included 1 year warranty, Brady offers premium support service agreements for both the BSP61 Print and Apply System and the ALF14 Label Feeder. Service agreements are fully customisable to your needs and can include premium support by phone and/or support at your premises.



Available service agreement options:

- preventive maintenance
- fast repairs
- replacement devices
- dedicated in-house contact center
- support in 12 languages
- local presence
- man hours included
- no unexpected costs

Scanners & portable data terminals

High quality scanners are available. With portable or integrated scanners, your traceability system can evolve beyond supply chain requirements and generate data that can be analysed to create business cases for production optimisation.



Available scanner services:

- scanner purchasing
- scanner configuration
- scanner integration

Integration

Brady offers label creation software with automation options, next to advice, support and full collaboration with third parties to help integrate our traceability solutions in your production line. The advantages of Smart Manufacturing including increased production control, centralised monitoring and continuous improvement data can be fully enabled by a complete integrated printed circuit board labelling system.



In-house laboratory

Brady's in-house laboratories rigourously test our solutions in line with standard testing methods. Our scientists test the performance of complete traceability label constructions including the liner, adhesives, label materials and label top coat to deliver solutions that solve your challenges. Our in-house lab can offer test results on request or test new traceability label requirements when relevant.



Automated print & apply



Durable labels



Custom support



In-house laboratory



Product specifications



BSP61 Printer

Article No.	Order Reference	Description
710948	BSP61-62L	BSP61 Print & Apply 600 dpi - for up to 50mm wide consumables to be combined with left applicator
710949	BSP61-34L	BSP61 Print & Apply 300 dpi - for up to 101mm wide consumables to be combined with left applicator
710952	BSP61-62R	BSP61 Print & Apply 600 dpi - for up to 50mm wide consumables to be combined with right applicator
710953	BSP61-34R	BSP61 Print & Apply 300 dpi - for up to 101mm wide consumables to be combined with right applicator

Printer Specifications

Description	Print and apply system precision developed for applications such as PCB assembly and marking, component and product marking in high quality.
Applications	Higher volume applications such as PCB marking, component and product marking in high quality demanding industries like automotive, electronics and manufacturing.
Hours of Operation	24 hours/ 7 days
Recommended Usage per Day	7000
Software Compatibility	LabelMark, Windows based driver for 3rd party software use, CodeSoft
Colour Capability	Monocolour
Connectivity Options	Serial, USB. Optional: Ethernet
Stand-alone Printing (Detached from PC)	-
Cutter	-
Hardware Options	Applicators
Internal Memory Capacity	64 MB
Memory - Ram/Flash	8 MB
Label Dimension Limits	Max. Width: 58.00 mm (BSP61-62) or 114 mm (BSP61-34) Min. Width: 4.00 mm (BSP61-62) or 10 mm (BSP61-34) Min. Height: 4.00 mm (BSP61-62) or 8 mm (BSP61-34)
Maximum Print Width (mm)	57.00 mm (BSP61-62) or 105.60 mm (BSP61-34)
Print Speed (mm/sec)	100 mm/sec (BSP61-62) 250 mm/sec (BSP61-34)
Print Technology	Thermal Transfer
Print Resolution (dpi)	300 / 600

BSP61 Printer Accessories

Article No.	Order Reference	Description
133251	PCK-6	Printer Cleaning Kit - Thermal Transfer Printers



BSP61 Applicator



Article No.	Order Reference	Description
710963	Appl. 4114L-200	Left applicator - cylinder stroke 200 mm - horizontal precision guide in feed direction
710964	Appl. 4114L-300	Left applicator - cylinder stroke 300 mm - horizontal precision guide in feed direction
710965	Appl. 4214L-200	Left applicator - cylinder stroke 200 mm - horizontal rotary cylinder (angle of rotation 90 other 180°)
710966	Appl. 4214L-300	Left applicator - cylinder stroke 300 mm - horizontal rotary cylinder (angle of rotation 90 other 180°)
710969	Appl. 4414L-200	Left applicator - cylinder stroke 200 mm - adjustable horizontal precision guides in X and Y direction (up to Y = 13 mm, X = 5 mm)
710970	Appl. 4414L-300	Left applicator - cylinder stroke 300 mm - adjustable horizontal precision guides in X and Y direction (up to Y = 13 mm, X = 5 mm)
710972	Appl. 4114R-200	Right applicator - cylinder stroke 200 mm - horizontal precision guide in feed direction
710973	Appl. 4114R-300	Right applicator - cylinder stroke 300 mm - horizontal precision guide in feed direction
710974	Appl. 4214R-200	Right applicator - cylinder stroke 200 mm - horizontal rotary cylinder (angle of rotation 90 other 180°)
710975	Appl. 4214R-300	Right applicator - cylinder stroke 300 mm - horizontal rotary cylinder (angle of rotation 90 other 180°)
710979	Appl. 4414R-200	Right applicator - cylinder stroke 200 mm - adjustable horizontal precision guides in X and Y direction (up to Y = 13 mm, X = 5 mm)
710980	Appl. 4414R-300	Right applicator - cylinder stroke 300 mm - adjustable horizontal precision guides in X and Y direction (up to Y = 13 mm, X = 5 mm)
711040	Appl. 4114L-200+PR	Left applicator - cylinder stroke 200 mm - horizontal precision guide in feed direction with pressure reducer
711041	Appl. 4114L-300+PR	Left applicator - cylinder stroke 300 mm - horizontal precision guide in feed direction with pressure reducer
711042	Appl. 4214L-200+PR	Left applicator - cylinder stroke 200 mm - horizontal rotary cylinder (angle of rotation 90 other 180°) with pressure reducer
711043	Appl. 4214L-300+PR	Left applicator - cylinder stroke 300 mm - horizontal rotary cylinder (angle of rotation 90 other 180°) with pressure reducer
711046	Appl. 4414L-200+PR	Left applicator - cylinder stroke 200 mm - adjustable horizontal precision guides in X and Y direction (up to Y = 13 mm, X = 5 mm) with pressure reducer
711047	Appl. 4414L-300+PR	Left applicator - cylinder stroke 300 mm - adjustable horizontal precision guides in X and Y direction (up to Y = 13 mm, X = 5 mm) with pressure reducer
711048	Appl. 4114R-200+PR	Right applicator - cylinder stroke 200 mm - horizontal precision guide in feed direction with pressure reducer
711049	Appl. 4114R-300+PR	Right applicator - cylinder stroke 300 mm - horizontal precision guide in feed direction with pressure reducer
711050	Appl. 4214R-200+PR	Right applicator - cylinder stroke 200 mm - horizontal rotary cylinder (angle of rotation 90 other 180°) with pressure reducer
711051	Appl. 4214R-300+PR	Right applicator - cylinder stroke 300 mm - horizontal rotary cylinder (angle of rotation 90 other 180°) with pressure reducer
711055	Appl. 4414R-200+PR	Right applicator - cylinder stroke 200 mm - adjustable horizontal precision guides in X and Y direction (up to Y = 13 mm, X = 5 mm) with pressure reducer
711056	Appl. 4414R-300+PR	Right applicator - cylinder stroke 300 mm - adjustable horizontal precision guides in X and Y direction (up to Y = 13 mm, X = 5 mm) with pressure reducer

Product specifications

ALF14-Label Feeder

Specifications	
Weight	0.45 kg
Size W x D x L (mm)	43 x 115 x 54
Height of pickup position (mm)	50
Chopping time	0.25s for 6.35 mm x 6.35 mm label
Approval/Compliance	CE, WEEE, RoHS
Voltage	24 V
Power Consumption	max. 24 W
Current Consumption	max. 1 A
Power Supply	Main supply wall plug charger, Machine cable (Eurplacer, Fritsch, Juki, Siemens, Yamaha)
Connector	9 pin SUB-D Male
Compatible Pick & Place Systems	Siemens ASM Siplace Series, Europlacer, Fritsch, Fuji NXT, Heeb innotec, Hitachi, Juki Series 2000, MyData, Samsung SM Series, Yamaha, Assembléon (others pending)
Signal Interface	- Label Feed Request - Label ready - Error
Minimum Label Size (mm)	4 x 4
Maximum Label Size (mm)	23 x 23
Max. Liner Width (mm)	25
Label Conveying Speed	10-200 mm/s
Label Positioning Frequency	up to 6 labels/second (depends on label size)



Label feeder / SMT machine compatibility

Is your equipment not listed? Contact us for more detail!

SUPPORTED SMT MACHINES:			SUPPORTED SMT MACHINES:			SUPPORTED SMT MACHINES:		
SMT Manufacturer	SMT Machine Model	Part No.	SMT Manufacturer	SMT Machine Model	Part No.	SMT Manufacturer	SMT Machine Model	Part No.
Assembleon	Emerald	195811	Juki	KE-3020 Flex Placer	195779	Yamaha	iPulse M7 with F2 feeders	196520
Assembleon	Emerald-X	195811	MyData Mycronic	DX	195792	Yamaha	iPulse M10 with F2 feeders	196520
Assembleon	MC-1	195790	MyData Mycronic	MY100-SX	195792	Yamaha	iPulse M20 with F2 feeders	196520
Assembleon	MC-12	195790	MyData Mycronic	MY100-DX	195792	Yamaha	iPulse M10 with F3 feeders	196519
Assembleon	MC-24	195790	MyData Mycronic	MY100-HX	195792	Yamaha	iPulse M20 with F3 feeders	196519
Assembleon	MC-24X	195790	MyData Mycronic	MY12	195792	Yamaha	S10-S20	195811
Assembleon	MC-5	195790	MyData Mycronic	MY15	195792	Yamaha	M10-M20	195811
Assembleon	MC-5 with ATS or MTF	195790	MyData Mycronic	MY200-SX	195792	Yamaha	M1	195811
Assembleon	MC-5X	195790	MyData Mycronic	MY200-DX	195792	Yamaha	YG100	195790
Assembleon	MC-8	195790	MyData Mycronic	MY200-HX	195792	Yamaha	YG100	195790
Assembleon	MG-1	195811	MyData Mycronic	MY9	195792	Yamaha	YG12F	195811
Assembleon	MG-1R	195811	MyData Mycronic	MY300-SX	195792	Yamaha	YG200	195811
Assembleon	MG-2	195811	MyData Mycronic	MY300-DX	195792	Yamaha	YG200L	195811
Assembleon	MG-3	195811	MyData Mycronic	MY300-HX	195792	Yamaha	YG300	195811
Assembleon	MG-5	195811	Samsung	DECAN	195789	Yamaha	YG88	195811
Assembleon	MG-8	195811	Samsung	DECAN F2	195789	Yamaha	YG88R	195811
Assembleon	MG-8R	195811	Samsung	SM 4-series	195789	Yamaha	YS100	195790
Assembleon	Opal-XII	195811	Samsung	SM 3-series	195789	Yamaha	YS12	195790
Assembleon	Sapphire	195811	Samsung	all other SM-series	195789	Yamaha	YS12F-Y12F(x)	195790
Assembleon	Sapphire-X	195811	Samsung	SM471	195789	Yamaha	YS12P	195790
Assembleon	Sapphire-XII	195811	Samsung	SM481	195789	Yamaha	YS24	195790
Assembleon	Topaz	195811	Samsung	SM482	195789	Yamaha	YS24X	195790
Assembleon	Topaz-X	195811	HANWHA	all SM-series	195789	Yamaha	YS88	195790
Assembleon	Topaz-Xi	195811	Siplace ASM	D	195810	Yamaha	YSM10	195790
Assembleon	Topaz-XII	195811	Siplace ASM	F	195810	Yamaha	YSM20 (Z:LEX)	195790
DATA I/O	PSV 5000/7000	235486	Siplace ASM	HF	195810	Yamaha	YSM40 (Z:TA)	195790
Fuji	AIMEX 2	195784	Siplace ASM	S	195810	Yamaha	YV100-II	195811
Fuji	AIMEX 2S	195784	Siplace ASM	D1i	195780	Yamaha	YV100X	195811
Fuji	NXT 1	195784	Siplace ASM	all X, TX & SX-series	196884	Yamaha	YV100Xe	195811
Fuji	NXT 2	195784	Siplace ASM	D1i	195781	Yamaha	YV100Xg	195811
Fuji	NXT 3	195784	Siplace ASM	all X and E-by-Siplace series	198524	Yamaha	YV100XgC	195811
Juki	FX-3 Speed Placer	195779	Yamaha	24	195790	Yamaha	YV100XgP	195811
Juki	FX-3R / FX-3RA	195779	Yamaha	88	195790	Yamaha	YV100XT	195811
Juki	JM-10 Multitask Platform	195779	Yamaha	100	195790	Yamaha	YV100XTg	195811
Juki	JM-20 Multitask Platform	195779	Yamaha	12F	195790	Yamaha	YV112-III	195811
Juki	JX-100LED Compact placer	195779	Yamaha	24X	195790	Yamaha	YV180X	195811
Juki	JX-300LED Compact Placer	195779	Yamaha	iPulse M1 with F2 feeders	196520	Yamaha	YV180Xg	195811
Juki	KE-2070 Speed Placer	195779	Yamaha	iPulse M2 with F2 feeders	196520	Yamaha	YV88X	195811
Juki	KE-2080 Flex Placer	195779	Yamaha	iPulse M4 with F2 feeders	196520	Yamaha	YV88Xg	195811
Juki	KE-3010 Speed Placer	195779	Yamaha	iPulse M6 with F2 feeders	196520	Yamaha	YVL88-II	195811

Product specifications

BradyPrinter i7100 Industrial label printer

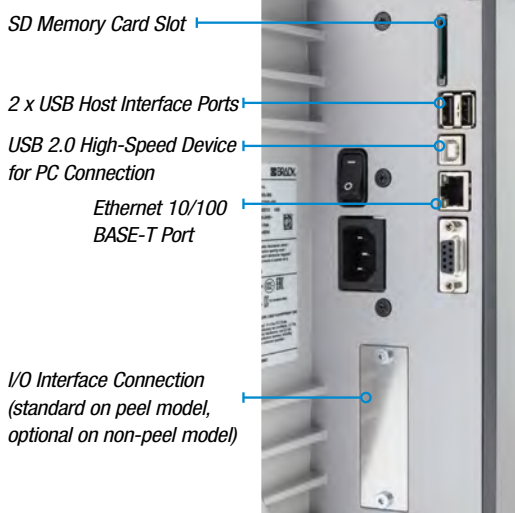


Printer Specifications	
Description	BradyPrinter i7100 Industrial Label Printer
Includes	This i7100 printer comes in a cardboard box. It ships with a power cord, 2 empty ribbon cores, a USB cable, a product CD holding the driver, the user manual in languages, the configuration/settings manual in English, a printed user manual in English and a Brady Workstation Basic Suite or a Brady Workstation PWID Suite
Applications	General & Industrial Identification; Circuit Board & Component Identification; Wire & Cable Marking; Laboratory Identification
Print Speed (mm/sec)	up to 300
Internal Memory	256MB RAM, 50MB IFFS Flash, SD card, slot up to 512GB
Software Compatibility	Brady Workstation, LabelMark, Windows based driver for 3rd party software use, CodeSoft
Recommended Usage per Day	7000
Colour Capability	Monocolour
Language Support	Arabic (Egypt), Bulgarian, Croatian, Czech, Danish, Dutch, English, Finnish, French, German, Greek, Hungarian, Italian, Lithuanian, Macedonian, Norwegian (Bokmål), Persian (Farsi), Polish, Portuguese, Romanian, Russian, Serbian, Slovenian, Spanish, Swedish, Turkish
Weight (kg)	10
Size W x H x D (mm)	252 x 288 x 460
Max. Label Width (mm)	110 mm
Min. Label Width (mm)	4 mm
Max. Liner Width (mm)	114 mm
Min. Liner Width (mm)	9 mm
Max. Print Width (mm)	105.7 mm
Warranty	2 years

Article No.	Order Reference	Description
300 dpi		
149046	i7100-300-EU	BradyPrinter i7100 300 dpi - EU
198607	i7100-300-EU-PWID	BradyPrinter i7100 300 dpi - EU with Brady Workstation PWID Suite
149049	i7100-300-P-EU	BradyPrinter i7100 300 dpi - EU with Peel function
198608	i7100-300P-EU-PWID	BradyPrinter i7100 300 dpi - EU with Peel function and Brady Workstation PWID Suite
149067	i7100-300-UK	BradyPrinter i7100 300 dpi - UK
198611	i7100-300-UK-PWID	BradyPrinter i7100 300 dpi - UK with Brady Workstation PWID Suite
149068	i7100-300-P-UK	BradyPrinter i7100 300 dpi - UK with Peel function
198609	i7100-300P-UK-PWID	BradyPrinter i7100 300 dpi - UK with Peel function and Brady Workstation PWID Suite
197690	i7100-300-US	BradyPrinter i7100 300 dpi - US
198612	i7100-300-US-PWID	BradyPrinter i7100 300 dpi - US with Brady Workstation PWID Suite
197689	i7100-300-P-US	BradyPrinter i7100 300 dpi - US with Peel function
198610	i7100-300P-US-PWID	BradyPrinter i7100 300 dpi - US with Peel function and Brady Workstation PWID Suite
600 dpi		
149047	i7100-600-EU	BradyPrinter i7100 600 dpi - EU
198613	i7100-600-EU-PWID	BradyPrinter i7100 600 dpi - EU with Brady Workstation PWID suite
149052	i7100-600-P-EU	BradyPrinter i7100 600 dpi - EU with Peel function
198614	i7100-600P-EU-PWID	BradyPrinter i7100 600 dpi - EU with Peel function and Brady Workstation PWID Suite
149066	i7100-600-UK	BradyPrinter i7100 600 dpi - UK
198617	i7100-600-UK-PWID	BradyPrinter i7100 600 dpi - UK with Brady Workstation PWID Suite
149065	i7100-600-P-UK	BradyPrinter i7100 600 dpi - UK with Peel function
198615	i7100-600P-UK-PWID	BradyPrinter i7100 600 dpi - UK with Peel function and Brady Workstation PWID Suite
197692	i7100-600-US	BradyPrinter i7100 600 dpi - US
198618	i7100-600-US-PWID	BradyPrinter i7100 600 dpi - US with Brady Workstation PWID Suite
197691	i7100-600-P-US	BradyPrinter i7100 600 dpi - US with Peel function
198616	i7100-600P-US-PWID	BradyPrinter i7100 600 dpi - US with Peel function with Brady Workstation PWID Suite

i **Brady Workstation Product and Wire Identification Software Suite**
Quickly identify your products and wires with customised text or graphical labels, using serialised or imported data. Workstation.BradyID.com/ProductandWire

Interfaces on the back of the device



BradyPrinter i7100 accessories

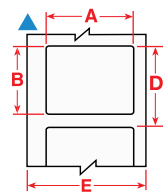
Article No.	Order Reference	Description
133251	PCK-6	Printer Cleaning Kit - Thermal Transfer Printers
149043	i7100-PR-120mm	120mm Platen Roller with synthetic rubber coating
149044	i7100-PRS-120mm	120mm Platen Roller with silicone rubber coating
149048	i7100-PR-25mm	25mm Platen Roller with synthetic rubber coating
149051	i7100-RAR-120mm	120mm Rewind Assist Roller with synthetic rubber coating
149054	i7100-PR-80mm	80mm Platen Roller with synthetic rubber coating
149055	i7100-PR-50mm	50mm Platen Roller with synthetic rubber coating
149069	i7100-CUTTER+TRAY	Cutter CU400 with Tray
149070	i7100-ANTI-S-BRUSH	Antistatic Brush
149071	i7100-IO-LABEL-BOX	Label Selection I/O Box
149072	i7100-PS1000MP	Present Sensor PS1000MP
149073	i7100-IO-CONNECTOR	I/O Interface Connector SUB-D 25pins
149074	i7100-RG400-PLATE	Rewind Guide Plate RG400
149075	i7100-PS900	Present Sensor PS900
149077	i7100-IO-INTERFACE	I/O Interface
149078	i7100-PERF-CUTTER	Perforation Cutter PCU400
149080	BT-USB-ADAPT	Bluetooth USB Adapter
149131	WLAN-EXANT	USB Wlan Stick with External Antenna
149132	i7100-ADAPTER-100	i7100 Adapter for 100mm Core
149135	i7100-PPLTEXT-410	i7100 Extended Peel off plate DP410
149207	i7100-TEAR-OFF	i7100 Tear off Plate
149208	i7100-HEX-KEY-TOOL	i7100 Spare Hex Key Tool
197823	SD-CARD-8GB	SD Memory card 8GB

Printed circuit board labels

Circuit board label

Blank labels

Diagram	Order Reference	Colour	Finish	Width A (mm)	Height B (mm)	Vertical Repeat D (mm)	Web Width E (mm)	Labels per Roll	Recommended Ribbon
B-7727: Polyimide									
▲	APL-01-7727-10	White	Gloss	5.00	5.00	7.99	11.43	10000	R6000HF
▲	APL-02-7727-10	White	Gloss	6.35	6.35	10.16	11.43	10000	R6000HF
▲	APL-03-7727-10	White	Gloss	7.00	7.00	10.85	11.43	10000	R6000HF
▲	APL-05-7727-10	White	Gloss	9.53	9.53	12.09	12.70	10000	R6000HF
▲	APL-07-7727-10	White	Gloss	19.05	6.35	10.16	22.23	10000	R6000HF



Pre-printed labels

Diagram	Order Reference	Colour	Finish	Width A (mm)	Height B (mm)	Vertical Repeat D (mm)	Web Width E (mm)	Labels per Roll	Recommended Ribbon
B-7727: Polyimide									
▲	APL-01-7727-10-PRT	White	Gloss	5.00	5.00	7.99	11.43	10000	R6000HF
▲	APL-02-7727-10-PRT	White	Gloss	6.35	6.35	10.16	11.43	10000	R6000HF
▲	APL-03-7727-10-PRT	White	Gloss	7.00	7.00	10.85	11.43	10000	R6000HF
▲	APL-05-7727-10-PRT	White	Gloss	9.53	9.53	12.09	12.70	10000	R6000HF
▲	APL-07-7727-10-PRT	White	Gloss	19.05	6.35	10.16	22.23	10000	R6000HF

Print ribbon

Order Reference	Colour	Width (mm)	Length (m)
R6000HF 30mmx300m /0	Black	30.00	300.00

Laser engravable labels B-730 range

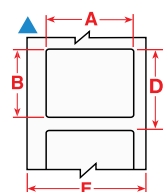
Standard labels

Diagram	Order Reference	Colour	Finish	Width A (mm)	Height B (mm)	Vertical Repeat D (mm)	Web Width E (mm)	Labels per Roll
B-730: Polyimide								
▲	LZR-208-730-10	Black	Matt	5.00	5.00	7.98	25.00	10000
▲	LZR-209-730-10	Black	Matt	6.35	6.35	10.16	25.00	10000
▲	LZR-210-730-10	Black	Matt	9.53	9.53	12.70	25.00	5000
▲	LZR-212-730-10	Black	Matt	19.05	6.35	10.16	25.00	10000



Auto-apply (APL) labels

Diagram	Order Reference	Colour	Finish	Width A (mm)	Height B (mm)	Vertical Repeat D (mm)	Web Width E (mm)	Labels per Roll
B-730: Polyimide								
▲	APL-01-730-10	Black	Matt	5.00	5.00	7.99	11.43	10000
▲	APL-02-730-10	Black	Matt	6.35	6.35	10.16	11.43	10000
▲	APL-03-730-10	Black	Matt	7.00	7.00	10.85	11.43	10000
▲	APL-05-730-10	Black	Matt	9.53	9.53	12.09	12.70	5000
▲	APL-07-730-10	Black	Matt	19.05	6.35	10.16	22.23	10000

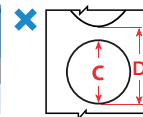


Printed circuit board label material range

B#	Base material	Adhesive	Colour	Finish	Application	Solvent	Fuel/Oil	Abrasion	High Heat	Low Temp	Removable	electrostatic dissipative
B-420	Polyester		White	Gloss	Pre-process labeling of Printed Circuit Board and Electronic Component process labelling, especially designed for laser engraving and die-cutting	✓		✓	✓	✓		
B-436	Polyimide	Removable	Amber	Matt	Printed Circuit Board and Component process labelling, cleanly removable	✓	✓	✓	✓	✓	✓	
B-717	Polyimide	Permanent	White	Gloss	Printed Circuit Board and Component process labelling, static dissipative adhesive	✓		✓	✓	✓		✓
B-718	Polyimide	Permanent	White	Gloss	Printed Circuit Board and Component process labelling, static dissipative adhesive	✓		✓	✓	✓		✓
B-719	Polyimide	Permanent	White	Matt	Printed Circuit Board and Component process labelling, static dissipative adhesive	✓		✓	✓	✓		✓
B-724	Polyimide	Permanent	Amber	Matt	Printed Circuit Board and Component process labelling	✓	✓	✓	✓	✓		
B-727	Polyimide	Permanent	White	Gloss	Printed Circuit Board and Component process labelling	✓		✓	✓	✓		
B-728	Polyimide	Permanent	White	Matt	Printed Circuit Board and Component process labelling	✓		✓	✓	✓		
B-730	Polyimide	Permanent	Black	Matt	Printed Circuit Board and Component process labelling, especially designed for laser engraving	✓		✓	✓	✓		
B-731	Polyimide	Permanent	Black	Matt	Printed Circuit Board and Component process labelling, especially designed for laser engraving, static dissipative adhesive	✓		✓	✓	✓		✓
B-734	Polyimide		White	Matt	Printed Circuit Board and Component process labelling, especially designed for laser engraving	✓		✓	✓	✓		
B-735	Polyimide		White	Matt	Printed Circuit Board and Component process labelling, especially designed for laser engraving, static dissipative adhesive	✓		✓	✓	✓		✓
B-777	Polyimide	Permanent	White	Gloss	Printed Circuit Board and Component process labelling, resists to aggressive cleaning processes, ideal for small font printing	✓		✓	✓	✓		
B-7727	Polyimide	Permanent	White	Gloss	Printed Circuit Board and Component process labelling, especially designed for auto-apply	✓		✓	✓	✓		

Auto-apply masking film

Diagram	Order Reference	Colour	Finish	Diameter C (mm)	Vertical Repeat D (mm)	Labels per Roll
B-7634: Polyimide						
✗	CMKC-0197-7634	Clear	Gloss	5.00	8.03	5000
✗	CMKC-0236-7634	Clear	Gloss	6.00	9.01	5000
✗	CMKC-0276-7634	Clear	Gloss	7.00	10.16	5000
✗	CMKC-0315-7634	Clear	Gloss	8.00	11.04	5000
✗	CMKC-0354-7634	Clear	Gloss	9.00	12.15	5000
✗	CMKC-0394-7634	Clear	Gloss	10.00	13.02	5000
✗	CMKC-0433-7634	Clear	Gloss	11.00	14.04	5000



i Clean Liner Technology

Brady's traceability labels can be equipped with Clean Liner Technology (CLT), an innovative solution that prevents adhesive bleeding. CLT enables a smooth production cycle by eliminating downtime due to labels not being placed, or due to a fractured liner.

Electrostatic discharge

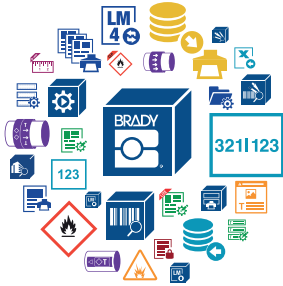
Brady's B-717, B-718, B-719 and B-731 printed circuit board labels do not contain high charging materials. The labels prevent the build-up of static electricity to protect PCB's from potentially damaging electrostatic discharge.

Product Information Resources



PCB Automation Web Page

Visit Brady's dedicated web page for printed circuit board identification www.bradyeurope.com/pcb. You will find links to the full offer of materials suitable for PCB labelling as well as a range of automated print & apply systems.



Design any label with Brady Workstation apps

Brady Workstation offers professional, intuitive apps to design quality product and cable labels and safety signs. With Brady Workstation label design becomes easier, faster and quickly adaptable to new label norms thanks to centralised updates. For more information visit www.bradyeurope.com/workstation.



Find us on YouTube

On Brady's YouTube channel you can find a quick overview of our wide range of portable and benchtop printers and several how-to videos. www.youtube.com/bradyeurope



Downloads

Find the latest product updates, manuals, tutorials, printer drivers, product demos and much more for your Brady products on www.bradyeurope.com/downloads.



Brady Technical Data Sheets

For indept information on any Brady material or print ribbon, visit www.bradyeurope.com/tds. To search, you enter keywords pertaining to your desired material or If you know the brady "B"-number for the material, simply enter the appropriate number.



Enter B# (B-XXX) or keyword



Brady Corporation

Our mission is to identify and protect people, products and places



COMPANY OVERVIEW

BRADY was founded in 1914 in Eau Claire, Wisconsin, as W.H. BRADY Co., and renamed BRADY Corporation in 1998. The company began selling products internationally in 1947. In 1984, BRADY went public, with stock trading on the Nasdaq Stock Market, and in 1999, moved trading of its stock to the New York Stock Exchange, where it trades under the symbol BRC. The company's global headquarters is in Milwaukee, Wisconsin.

BRADY MANUFACTURES AND MARKETS:

- products for identification and safety applications such as signs and markers, printing systems and software to produce identification products on-site and on demand
- products for wire identification, including labelling materials and tools for wire and cable marking in the electrical, datacom and telecommunication markets
- high-performance identification products, including labels and signs that remain legible and highly adhesive even in harsh environments
- products that identify people and enhance security by ensuring the right persons are in the right places at the right time

OPERATIONS – SOME FACTS:

- 6500 employees around the world
- Operations in 29 countries
- Distribution in more than 100 countries through more than 4,400 distributor partners



Africa

Randburg, South Africa
Tel.: +27 11 704 3295
Email: africa@bradycorp.com

Benelux

Zele, Belgium
Tel.: +32 (0) 52 45 78 11
Email: benelux@bradycorp.com

Central & Eastern Europe

Bratislava, Slovakia
Tel.: +421 2 3300 4800
Email: central_europe@bradycorp.com

Denmark

Odense
Tel.: +45 66 14 44 00
Email: denmark@bradycorp.com

France

Roncq
Tel.: +33 (0) 3 20 76 94 48
Email: france@bradycorp.com

Germany, Austria & Switzerland

Egelsbach, Germany
Tel.: +49 (0) 6103 7598 660
Email: germany@bradycorp.com

Hungary

Budaörs
Tel.: +36 23 500 275
Email: central_europe@bradycorp.com

Italy

Gorgonzola
Tel.: +39 02 26 00 00 22
Email: italy@bradycorp.com

Middle East FZE

Dubai, UAE
Tel.: +971 4881 2524
Email: me@bradycorp.com

Norway

Kjeller
Tel.: +47 70 13 40 00
Email: norway@bradycorp.com

Romania

Bucharest
Tel.: +40 21 202 3032
Email: central_europe@bradycorp.com

Russia

Moscow
Tel.: +7 495 269 47 87
Email: central_europe@bradycorp.com

Spain & Portugal

Madrid, Spain
Tel.: +34 900 902 993
Email: spain@bradycorp.com,
portugal@bradycorp.com

Sweden, Finland, Baltic states

Kista, Sweden
Tel.: +46 (0) 8 590 057 30
Email: sweden@bradyeurope.com

Turkey

Istanbul
Tel.: +90 212 264 02 20 / 264 02 21
Email: turkey@bradycorp.com

UK & Ireland

Banbury, UK
Tel.: +44 (0) 1295 228 288
Email: uk@bradycorp.com



To help minimise our impact on the environment, Brady limits its number of reprints. Updated versions are always available for download on www.bradyeurope.com.

 Search for: EUR-M-880-EN

Your distributor