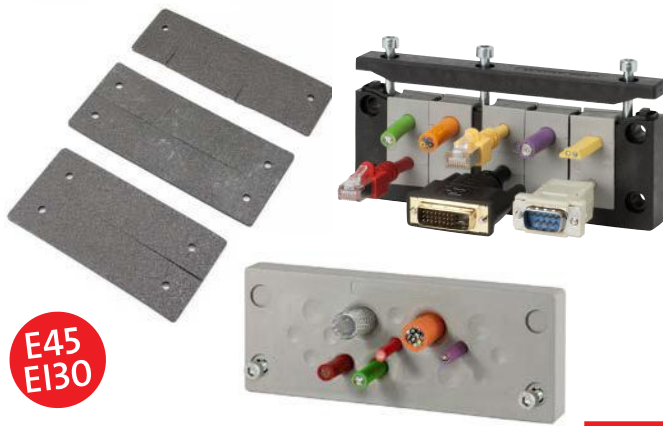


Cable entry systems

with IFPS fire penetration seals according to EN 45545-3



Also available: IFPS fire penetration seal stripe, 900 x 17 x 2.7 mm, self-adhesive
Order No. 99303

Product description

icotek cable entry frames and plates with fire penetration seals, approved for use in railway technology (meeting the standards EN 45545-2, EN 45545-3 and EN 1363-1).

The intumescent (foaming) IFPS fire penetration seals which are mounted at the backside of the cable entry components consist of expandable graphite and increase their volume by a multiple in case of a fire.

This creates a barrier which prevents a penetration of flames and high heat from one room into another for the longest possible period.

Advantages & benefits

- Approved for use in railway technology (EN 45545-2, EN 45545-3 and EN 1363-1)
- Easy assembly
- High cable density
- Only one fire penetration seal per cable entry component required
- Large product variety
- Ingress protection up to IP66 / UL Type 4X
- High classifications E45 / EI30

Specifications

Cable entry comp. See standard products (p. 8 – 77)
Fire penetration seal Intumescent (foaming)
Material Graphite (C)

Scope of delivery

Each 1 cable entry frame / plate + suitable fire penetration seal.

Suitable grommets are not included in the shipment and have to be ordered separately.

Type	Order No.	Cut-out	IP Ingress protection	PU
KEL-DPU 24 13-BS gy	99300.010	36 × 112 mm	IP66 / IP68	5
KEL-DPU 24 14-BS gy	99300.011	36 × 112 mm	IP66 / IP68	5
KEL-DPU 24 16-BS gy	99300.012	36 × 112 mm	IP66 / IP68	5
KEL-DPU 24 16-1-BS gy	99300.013	36 × 112 mm	IP66 / IP68	5
KEL-DPU 24 17-BS gy	99300.014	36 × 112 mm	IP66 / IP68	5
KEL-DPU 24 20-BS gy	99300.015	36 × 112 mm	IP66 / IP68	5
KEL-DPU 24 21-BS gy	99300.016	36 × 112 mm	IP66 / IP68	5
KEL-DPU 24 32-BS gy	99300.017	36 × 112 mm	IP66 / IP68	5
KEL-DPZ 16 11-BS gy	NEW 99301.007	36 × 86 mm	IP65 / IP66	5
KEL-DPZ 16 14-BS gy	NEW 99301.008	36 × 86 mm	IP65 / IP66	5
KEL-DPZ 16 20-BS gy	NEW 99301.009	36 × 86 mm	IP65 / IP66	5
KEL-DPZ 16 25-BS gy	NEW 99301.010	36 × 86 mm	IP65 / IP66	5
KEL-DPZ 16 34-BS gy	NEW 99301.011	36 × 86 mm	IP65 / IP66	5
KEL-DPZ 24 14-BS gy	99300.018	36 × 112 mm	IP65 / IP66	5
KEL-DPZ 24 15-BS gy	99300.019	36 × 112 mm	IP65 / IP66	5
KEL-DPZ 24 16-BS gy	99300.020	36 × 112 mm	IP65 / IP66	5
KEL-DPZ 24 17-BS gy	99300.021	36 × 112 mm	IP65 / IP66	5
KEL-DPZ 24 25-BS gy	99300.022	36 × 112 mm	IP65 / IP66	5
KEL-DPZ 24 32-BS gy	99300.023	36 × 112 mm	IP65 / IP66	5
KEL-DPZ 24 42-BS gy	99300.024	36 × 112 mm	IP65 / IP66	5

Fire penetration seal

Type	Order No.	Cut-out	PU
Fire penetration seal size 24	99300	36 × 112 mm	5
Fire penetration seal size 16	99301	36 × 86 mm	5
Fire penetration seal size 10	99306	36 × 65 mm	5
Fire penetration seal size B	99305	46 × 46 mm	5
Fire penetration seal size E5	99302	24 × 112 mm	5
Fire penetration seal size E4	99309	24 × 86 mm	5
Fire penetration seal size E3	99308	24 × 65 mm	5
Fire penetration seal size E2	99307	24 × 43 mm	5



Appendix

Technical data and comments

Chapter content



Technical data	
Drilling templates and cut-outs	220 – 221
Appendix	
Certificates	222 – 223
Appendix	
Flammability classification according to UL94	224
Appendix	
IP sealing rates according to IEC/EN 60529	225
Appendix	
General reference notes	226
Appendix	
Reference list	227 – 230



At a glance ...

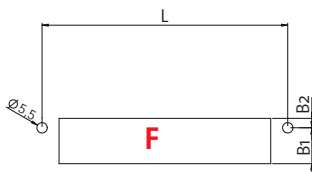
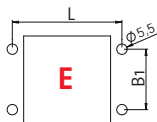
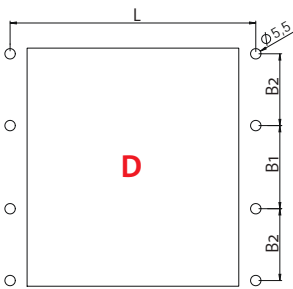
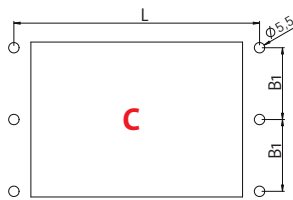
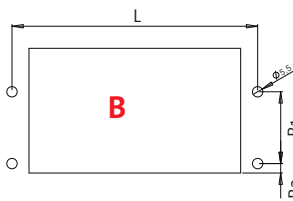
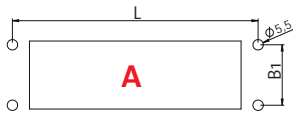
Technical data and drilling templates at a glance.

IP rating according to IEC/EN 60529 and flammability classification according to UL94.

Reference list, abbreviations and certificates.

Technical data

Drilling templates



Type	Page	Cut-out type	Drilling template [mm]			Cut-out h x l [mm]
			L	B1	B2	
KEL(-U/-ER) 24 x KEL-FG A KEL-QUICK 24 10 KEL-BES(-S) 24 KEL-DPZ 24 x KEL-DPU 24 x	8 - 9 28 60 74 - 75 84 - 85 82 - 83	A	130	32	-	112 x 36
KEL-SNAP 24	31	A	130	32	-	max. 112 x 46
KEL(-U/-ER) 16 x KEL-QUICK 16 8 KEL-BES(-S) 16 KEL-DPZ 16	10 - 11 60 74 - 75 86	A	103	32	-	86 x 36
KEL-SNAP 16	31	A	103	32	-	max. 86 x 46
KEL(-U/-ER) 10 x KEL-QUICK 10 6 KEL-SNAP 10 KEL-BES(-S) 10	12 - 13 60 31 74 - 75	A	83	32	-	65 x 36
KEL-DPZ 6	87	A	70	32	-	52 x 36
KEL 24 x-E KEL 16 x-E	22 25	B	130 103	38	5	112 x 66 86 x 66
KEL 24 x-MT KEL 16 x-MT	23 26	C	130 103	38	-	112 x 82 86 x 82
KEL 24 x-2MT KEL 16 x-2MT	24 27	D	130 103	44	38	112 x 126 86 x 126
KEL(-U/-ER)-B KEL-DPZ-B	14 - 15 88	E	58	32	-	46 x 46
KEL-SNAP-B	31	E	56	32	-	38 x 46
KEL-FG B KEL-QUICK-B4	29 60	E	62.5 58	32	-	36 x 46
KEL(-ER)-E x KEL-QUICK-E KEL-FL x	16 - 17 61 32	F	E2: 58 E3: 83 E4: 103 E5: 130	19	5	E2: 43 x 24 E3: 65 x 24 E4: 86 x 24 E5: 112 x 24